

TASCAM

D01360620D

TASCAM DCP CONNECT TASCAM EZ CONNECT

USER'S MANUAL



1 - TASCAM DCP CONNECT / TASCAM EZ CONNECT

Contents

1 - TASCAM DCP CONNECT / TASCAM EZ CONNECT	2
Overview	2
Conventions used in this manual.....	3
Trademarks and copyrights	3
Operating environment	3
iOS devices	3
Android devices.....	3
Windows.....	3
Mac.....	3
Dante Compact Processor Series devices and software versions.....	3
Installing the dedicated software.....	4
iOS/Android devices	4
Windows.....	4
Mac.....	5
Working with Gatekeeper.....	6
2 - TASCAM DCP CONNECT.....	7
TASCAM DSP CONNECT can be connected with the following Dante Compact Processor Series devices.....	7
Using TASCAM DCP CONNECT in demo mode	8
Screen overviews	8
Tab Area overview.....	10
PRESET page.....	11
INPUT page	13
Additional Input Settings screen.....	14
COMPRESSOR tab.....	15
EQUALIZER tab	16
MIXER page.....	17
Additional Mixer Settings screen.....	18
DUCKING settings area.....	19
ANC settings area.....	19
ROUTING page.....	20
OUTPUT page.....	21
Additional Output Settings screen	22
EQUALIZER tab.....	23
DELAY tab.....	23
SETTINGS page	24
EXPORTED FILES screen	25
GPI SETTING screen	26
EZ CONNECT page.....	27

3 - TASCAM EZ CONNECT.....	28
TASCAM EZ CONNECT can be connected with the following Dante Compact Processor Series devices.....	28
Using TASCAM EZ CONNECT in demo mode	28
Making TASCAM EZ CONNECT settings.....	29
Setting the SOURCE SELECT area	29
Setting the Volume Screen	30
Understanding information codes.....	32
4 - TASCAM EZ CONNECT setting example	33
Operating multiple Dante Compact Processor Series devices with TASCAM EZ CONNECT	33

Overview

TASCAM DCP CONNECT

TASCAM DCP CONNECT is control software designed to be used by system integrators and managers with the Dante Compact Processor Series.

From building a system that uses a Dante Compact Processor Series device to daily management and operation, it supports a wide range of functions.

- Control software designed to be used by system integrators and managers with the Dante Compact Processor Series
- Input module operation
- Matrix mixer operation
- Mix and output routing operation
- Output module operation
- Create setups for the TASCAM EZ CONNECT control software for end-users
- TASCAM DCP CONNECT and TASCAM EZ CONNECT can be downloaded for free from the App Store for iOS, Google Play for Android and the TEAC Global Site (<http://teac-global.com>) for Windows and Mac.

TASCAM EZ CONNECT

TASCAM EZ CONNECT is control software with a simple and easy to understand interface designed for end-users.

The controls of this control software for system integrators and managers can be customized

By assigning only the necessary functions, unintended operation mistakes and trouble by end users can be avoided, enabling facility managers to use it with peace of mind.

Before using this software, read the Software Use License Agreement and agree to its terms.

1 - TASCAM DCP CONNECT / TASCAM EZ CONNECT

Conventions used in this manual

The following conventions are used in this manual.

- Smartphones, tablets and computers are called “devices”.
- Messages that appear on an iPhone, iPad or Android device are shown like this: “*INFO*”.
- Additional information is provided as necessary as tips, notes and cautions.

TIP

These are tips about how to use the software.

NOTE

These provide additional explanations and describe special cases.

ATTENTION

Failure to follow these instructions could result in damage to equipment or lost data, for example.

CAUTION

Failure to follow these instructions could result in injury.

Trademarks and copyrights

- TASCAM is a registered trademark of TEAC Corporation.
- Android and Google Play are trademarks of Google Inc.
- Apple, Mac, macOS, iPad and the App Store are trademarks of Apple Inc. in the U.S. and other countries. The iPhone trademark is used under license from Aiphone Co., Ltd.
- The App Store is a service mark of Apple Inc.
- IOS is a trademark or registered trademark of Cisco Systems, Inc. in the U.S. and other countries and is used under license.
- Microsoft, Windows, Windows Vista and Windows Media are either registered trademarks or trademarks of Microsoft Corporation in the United States and/or other countries.
- Audinate®, the Audinate logo and Dante are trademarks of Audinate Pty Ltd.
www.audinate.com/patents
- Other company names, product names and logos in this document are the trademarks or registered trademarks of their respective owners.

Operating environment

iOS devices

Supported operating systems

TASCAM DCP CONNECT: iPadOS 13, iOS 12, iOS 11
TASCAM EZ CONNECT: iPadOS 13, iOS 13, iOS 12, iOS 11

Supported devices

TASCAM DCP CONNECT: iPad with arm64 or newer processor
TASCAM EZ CONNECT: iPhone, iPad or iPod touch with arm64 or newer processor

Android devices

Supported operating systems

Android 5.0 - 9.0

Supported devices

TASCAM DCP CONNECT: Android tablet with a screen that is at least 7 inches (8 inches or larger recommended)
TASCAM EZ CONNECT: Android device with a screen that is at least 4 inches

Windows

Supported operating systems

Windows 10 (32bit, 64bit)
Windows 8.1 (32bit, 64bit)
Windows 7 SP1 (32bit, 64bit) or newer

NOTE

It cannot be used with Windows 8, Windows XP or Windows Vista.

Computer hardware requirements

Computer running Windows

CPU

Intel Core i series or newer recommended

Memory

2 GB or more (at least 4 GB recommended)

Open disc space

At least 150 MB

Screen resolution/number of colors

1280×1024 (SXGA) or higher
True Color (32-bit) recommended

Mac

Supported operating systems

macOS Catalina (10.15)
macOS Mojave (10.14)
macOS High Sierra (10.13)

Supported models

Macs with Intel Core i/Core M series processors

Memory

2 GB or more (at least 4 GB recommended)

Open disc space

At least 150 MB

Screen resolution

1280×1024 (SXGA) or higher

Dante Compact Processor Series devices and software versions

Supported devices

AE-4D, ML-4D/OUT-E, ML-4D/OUT-X, MM-2D-E, MM-2D-X, MM-4D/IN-E, MM-4D/IN-X

Software versions

Dante Compact Processor Series device: 1.03*
TASCAM DCP CONNECT software version: 1.1.1
TASCAM EZ CONNECT software version: 1.1.1

* We recommend that you always use the latest firmware for the Compact Processor Series device. For the latest firmware, visit the TEAC Global Site (<http://teac-global.com>).

1 - TASCAM DCP CONNECT / TASCAM EZ CONNECT

Installing the dedicated software

iOS/Android devices

1. Connect the smartphone or tablet device to the Internet.
 2. Search for the app (TASCAM DCP CONNECT or TASCAM EZ CONNECT) on Google Play for an Android device or on the App Store for an iOS device. Then, download and install it.
- Please be aware that you are responsible for any transmission costs related to Internet connection.

Windows

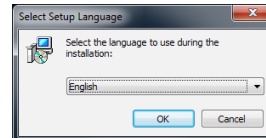
This example explains the procedures to install TASCAM DCP CONNECT.

Follow the same procedures to install TASCAM EZ CONNECT.

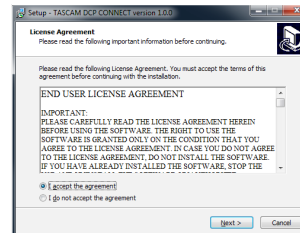
1. Connect the computer you are using to the Internet.
 2. Download the TASCAM DCP CONNECT application installer from the TEAC Global Site (<http://teac-global.com>).
- Please be aware that you are responsible for any transmission costs related to Internet connection.

3. Decompress the file after downloading, and double-click the *TASCAM_DCP_CONNECT_installer_x.x.x.exe* file ("x.xx" is the version) to launch the installer.

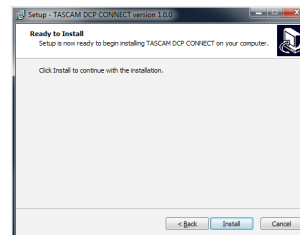
When the installer language selection screen opens, select the language you want and click the "OK" button.



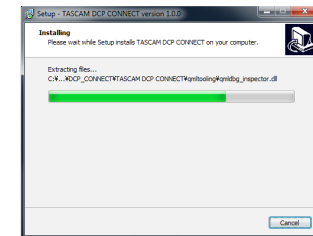
4. The software license agreement screen opens. Select "**I accept the agreement**" to agree to the license, and click "**Next >**" to continue.



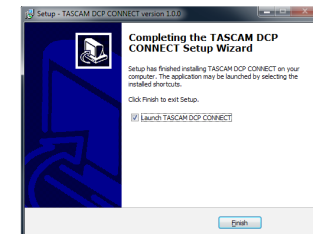
5. The installation preparation completion screen opens. Click the "**Install**" button.



6. The installation progress screen opens. To cancel installation at this time, click the "**Cancel**" button.



7. The installation completion screen opens. To launch TASCAM DCP CONNECT immediately, click the "**Finish**" button. To launch TASCAM DCP CONNECT later, remove the check (✓) from the box next to "Launch TASCAM DCP CONNECT", and then click the "**Finish**" button.



This completes installation of the software.

1 - TASCAM DCP CONNECT / TASCAM EZ CONNECT

Mac

NOTE

While installing the Mac TASCAM DCP CONNECT application, a warning message like this might appear: **"TASCAM_DCP_CONNECT.pkg' can't be opened because it was not downloaded from the Mac App Store."** If a message like this appears, follow the instructions in "Working with Gatekeeper" on page 6 and then proceed with the installation.

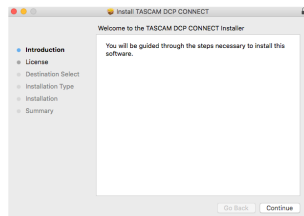
1. Download the latest TASCAM DCP CONNECT app for the operating system being used from the TEAC Global Site (<http://teac-global.com/>) and save it on that computer.
2. Double-click "TASCAM_DcpConnect_x.x.x.dmg" (x.x.x is the version number), which is the saved disk image file for the Mac TASCAM DCP CONNECT installer, and double-click "TASCAM_DcpConnect.pkg" inside the folder that opens.



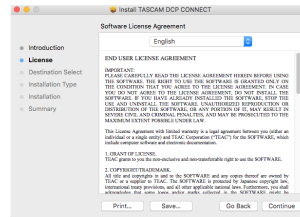
NOTE

Depending on the computer's settings, the downloaded zip file might not have opened automatically. In this case, open the zip file first and then double-click the disk image file.

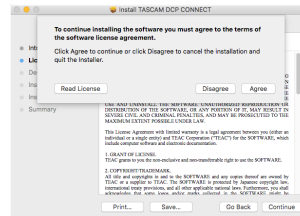
3. When the installer starts, click the "Continue" button.



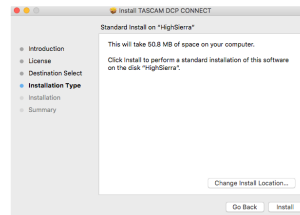
4. Next, select the desired language and click the "Continue" button.



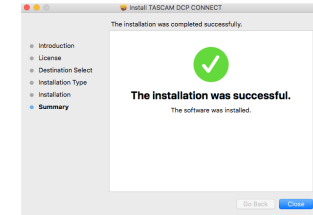
5. Click the "Read License" button and check the contents of the Software License Agreement. If you agree to the contents, click "Agree". Then, click the "Next" button.



6. Click the "Install" button in the window that opens to start installation.



7. The following screen appears when installation has completed. The following screen appears when installation has completed. Click the "Close" button.



This completes installation of the software.

1 - TASCAM DCP CONNECT / TASCAM EZ CONNECT

Working with Gatekeeper

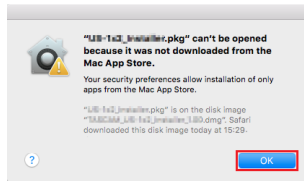
When using macOS, depending on the Gatekeeper security function setting, a warning message might appear during installation.

The solution depends on the warning message shown.

See the following explanations for details.

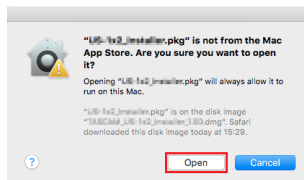
When the Gatekeeper setting is "Allow applications downloaded from: the Mac App Store"

The following security warning might be shown: "*TASCAM_DcpConnect.pkg* can't be opened because it was not downloaded from the Mac App Store."



In this case, click the "OK" button to close the message. Then, control-click (or right-click) the file and click "Open" in the menu.

When the "*TASCAM_DcpConnect.pkg* can't be opened because it was not downloaded from the Mac App Store. Are you sure you want to open it?" security warning message appears, click the "Open" button.



This warning message might also appear when the Gatekeeper setting is something other than "Allow applications downloaded from: the Mac App Store."

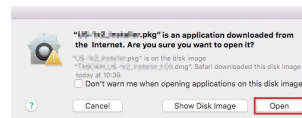
The "*TASCAM_DcpConnect.pkg* can't be opened because it was not downloaded from the Mac App Store." security warning might be shown again, and the file might not be able to be opened.



In this case, copy the file from the folder where it is to the desktop or another folder, and then open it. Alternatively, change the Gatekeeper settings to "Allow apps downloaded from: App Store and identified developers" and try opening it again.

When the Gatekeeper setting is "Allow applications downloaded from: the Mac App Store"

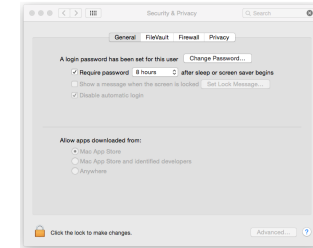
The following security warning might be shown: "*TASCAM_DcpConnect_x.x.x.pkg* (x.x.x is the version number) is an application downloaded from the Internet. Are you sure you want to open it?" In this case, click the "Open" button.



Changing the Gatekeeper setting

The Gatekeeper setting can be changed using the "Allow applications downloaded from:" item on the "General" page of the "Security & Privacy" pane of the System Preferences.

To change this, you must click the lock icon (🔒) at the bottom left and enter a password to unlock the settings.



This setting will lock again when you click the 🔒 button or type command-Q to close the System Preferences or when you click "Show All" to close the open pane.

ATTENTION

Changing the Gatekeeper setting could result in security risks. If you changed the Gatekeeper setting to decrease security (use one of the lower settings), set it back to the original setting after installing the application.

2 - TASCAM DCP CONNECT

TASCAM DSP CONNECT can be connected with the following Dante Compact Processor Series devices.

1. Turn on the Dante Compact Processor Series device and connect it to a router with a LAN cable.
2. Connect the devices running TASCAM DSP CONNECT to the network by Wi-Fi or with wired connections to the router.

ATTENTION

Connect the Dante Compact Processor Series device and other devices to the same router.

If connections are made through multiple hubs and routers, the app might not be able to detect devices on the network using UPnP multicasting.

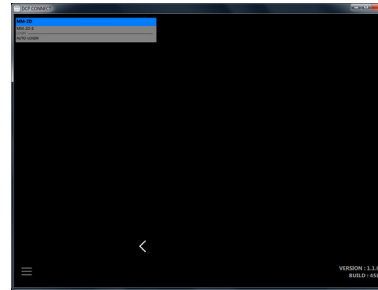
Even when the Dante Compact Processor Series device and other devices are connected to the same hub or router, detection might not be possible depending on the models being used.

For further information, please contact your network administrator.

NOTE

- The Dante audio network and the network for operation using the app are the same.
- Depending on the version of Android that you are using, you might not be able to connect to a Wi-Fi access point that is not connected to the Internet. If this occurs, enable airplane mode or otherwise turn off mobile networks and turn Wi-Fi on. For details, contact the manufacturer of the smartphone or tablet device that you are using.

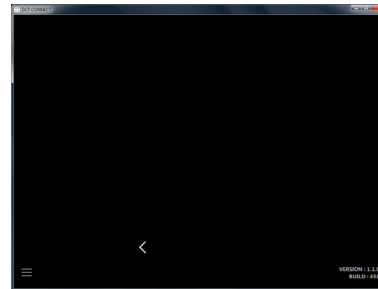
3. The following login screen will appear when TASCAM DCP CONNECT is launched.



If multiple Dante Compact Processor Series devices are connected by LAN, they will all appear on the login screen.

NOTE

- The TASCAM DCP CONNECT version is shown at the bottom right of this screen.
- If the Dante Compact Processor Series device is off or it cannot be detected on the network, the following login screen will appear.



4. Tap the Dante Compact Processor Series device that you want to log in to. Select and log into the Dante Compact Processor Series device that you want to set or check. The TASCAM DCP CONNECT *INPUT* page will open when the connection between the Dante Compact Processor Series device and the other device is established.



NOTE

No default password is set for the Dante Compact Processor Series device. Leave the password field blank to log in. Set the password for the Dante Compact Processor Series device on the SETTINGS screen as desired. If no password is set, settings will not be protected. (see "SETTINGS page" on page 24)

2 - TASCAM DCP CONNECT


Using TASCAM DCP CONNECT in demo mode

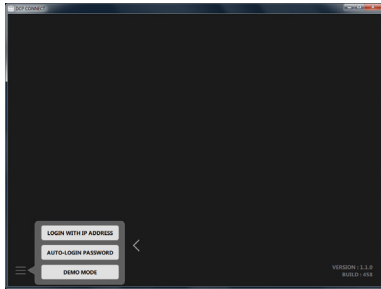
In demo mode, TASCAM DCP CONNECT can be tried without a Dante Compact Processor Series unit.

Using TASCAM DCP CONNECT in demo mode allows users to check the possible settings.

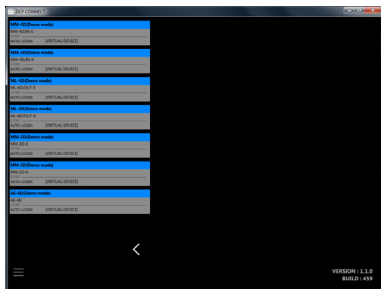
NOTE

When used in demo mode, Dante Compact Processor Series unit settings cannot be changed.

1. Tap the  button.
This opens a pop-up menu.



2. Tap the **DEMO MODE** button to add virtual demo devices to the device browser area.



3. Tap the device to use in demo mode to enable demo use. In demo mode, "**Demo mode**" appears after the unit name and "**DEMO MODE**" appears at the top right of the screen.

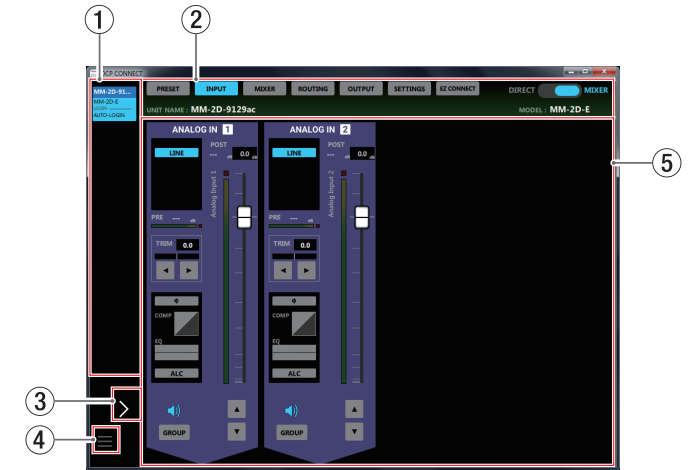


NOTE

Once a virtual demo device has been added, it will not disappear until the application is restarted.

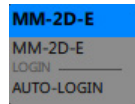
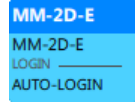
Screen overviews

The screen is divided into three main areas.


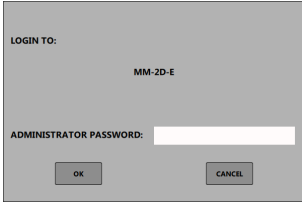
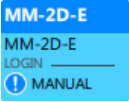


① **Device Browser Area**

The model names, unit nicknames and login statuses of Dante Compact Processor Series devices that have been detected on the connected Dante network are shown here.

Indicator appearance	Login status	Meaning
	Automatically logged in (not selected)	After a Dante Compact Processor Series device is detected, TASCAM DCP CONNECT will try once to log in as an administrator using the password that it has. If login succeeds without issue, the device name will appear with the color shown to the left. Click this to enable operation of the device.
	Automatically logged in (selected)	In the Device Operation Area (⑤) the INPUT and OUTPUT screens will be shown.

2 - TASCAM DCP CONNECT

Indicator appearance	Login status	Meaning
	Automatic login failed	<p>The password that TASCAM DCP CONNECT has does not match the administrator password for the Dante Compact Processor Series device.</p> <p>Click this indicator to open the following pop-up window.</p>  <p>Operation of the device will become possible if the password is input and login succeeds.</p>
	Manual login	<p>After login using the above method succeeds, "MANUAL" appears for the login status.</p>

② Tab Area

Use these to switch the page shown in the Device Operation Area (⑤) and make internal settings for the selected Dante Compact Processor Series device. (see "Tab Area overview" on page 10)

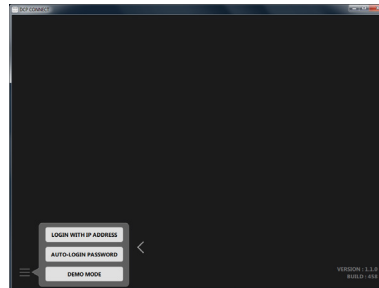
③ Device Browser

Tap this area to expand the Device Browser Area. This enables device nicknames that are cut off to be checked.



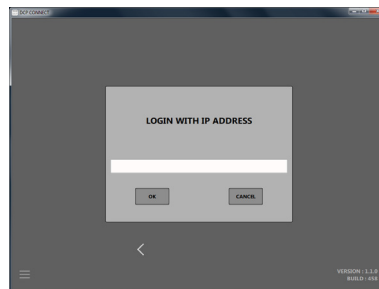
④ ≡ button

Tapping this button will open the following pop-up menu.



LOGIN WITH IP ADDRESS

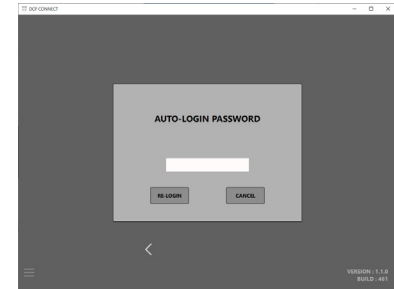
Tap this menu item to open the following screen where you can input an IP address and log in.



Use this function if DHCP is set to STATIC (DHCP OFF) for the **NETWORK SETTING** item on the SETTINGS screen and detection is not possible using UPnP multicasting because devices are on different network segments, for example.

AUTO-LOGIN PASSWORD

Tap this menu item to open the following screen where you can register a new password.



In addition to uppercase and lowercase alphabet letters and numbers, the following characters can also be used.

()[]{}!@#\$%&.,;_-'^~

The maximum number of characters is 20.

After inputting the new password in the **AUTO-LOGIN PASSWORD** field, tap the **RE-LOGIN** button to log in with the new password. This password will be saved by TASCAM DCP CONNECT and used with future devices.

DEMO MODE

Tap this menu item, to try TASCAM DCP CONNECT without a Dante Compact Processor Series unit. (see "Using TASCAM DCP CONNECT in demo mode" on page 8)

⑤ Device Operation Area

Make settings for the selected Dante Compact Processor Series device here.

Tap a screen selection button in the Tab area (②) to open that page in the operation area. (see "Tab Area overview" on page 10)

2 - TASCAM DCP CONNECT

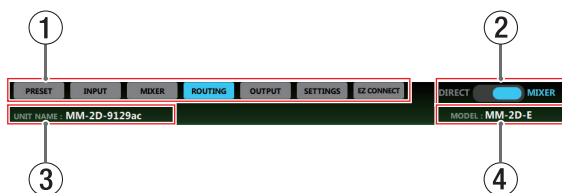
Tab Area overview

Selection buttons for each page are shown at the top of the screen.

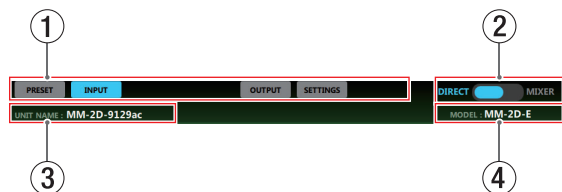
The locations of the buttons depend on the size of the window or tablet display.

The buttons shown also depend on the setting of the mode switch (②).

MIXER mode



DIRECT mode



① Page selection buttons

Tap a page selection button to open that page.

The selection button for the open page appears lit.

Button	Meaning
PRESET	This page shows information about the current preset and can be used to set and work with presets.
INPUT	This shows information about the signals being input and can be used to make input settings. NOTE When an MM-4D/OUT-E or MM-4D/OUT-X is being operated, the INPUT button will not be shown.
MIXER	Use this page to make mix channel settings. This is not shown when the mode switch (②) is set to DIRECT .

Button	Meaning
ROUTING	Use this page to assign mixed signals to multiple output channels. This is not shown when the mode switch (②) is set to DIRECT .
OUTPUT	This shows information about the signals being output from the analog output jacks and can be used to make output settings. NOTE When an MM-4D/IN-E or MM-4D/IN-X is being operated, the OUTPUT button will not be shown.
SETTING	This shows the status of the connected Dante Compact Processor Series device and can be used to make related settings.
EZ CONNECT	Use this page to make TASCAM EZ CONNECT settings. This is not shown when the mode switch (②) is set to DIRECT .

NOTE

When an AE-4D is being operated, the **PRESET**, **MIXER**, **ROUTING** and **EZ CONNECT** buttons will not be shown.

② Mode switch

This changes the internal operation of the Dante Compact Processor Series device as follows.

MIXER mode: The **MIXER** and **ROUTING** screens can be set as desired and inputs and outputs can be determined.

DIRECT mode: The analog inputs and outputs and the Dante inputs and outputs are set as follows. The channels depend on the model of the Dante Compact Processor Series device.

Example of inputs and outputs in DIRECT mode

Input channel	Output channel
ANALOG IN 1	DANTE OUT 1
ANALOG IN 2	DANTE OUT 2
ANALOG IN 3	DANTE OUT 3
ANALOG IN 4	DANTE OUT 4
DANTE IN 1	ANALOG OUT 1
DANTE IN 2	ANALOG OUT 2

Input channel	Output channel
DANTE IN 3	ANALOG OUT 3
DANTE IN 4	ANALOG OUT 4

NOTE

When an AE-4D is being operated, the mode switch (②) will not be shown.

The input and output channels will be as follows.

Input channel	Output channel	
AES/EBU IN 1	DANTE OUT 1	
AES/EBU IN 2	DANTE OUT 2	
AES/EBU IN 3	DANTE OUT 3	This will not be shown when the sampling frequency of the connected device is 88.2 or 96 kHz.*
AES/EBU IN 4	DANTE OUT 4	
DANTE IN 1	AES/EBU OUT 1	
DANTE IN 2	AES/EBU OUT 2	
DANTE IN 3	AES/EBU OUT 3	This will not be shown when the sampling frequency of the connected device is 88.2 or 96 kHz.*
DANTE IN 4	AES/EBU OUT 4	

* The sampling frequency can be checked with the **SAMPLING FREQUENCY** item on the **SETTINGS** page.

③ UNIT NAME

This shows the name set for the **UNIT NAME** item on the **SETTINGS** page. (see "SETTINGS page" on page 24)

④ MODEL

This shows the model of the Dante Compact Processor Series device connected to TASCAM DSP CONNECT.

2 - TASCAM DCP CONNECT

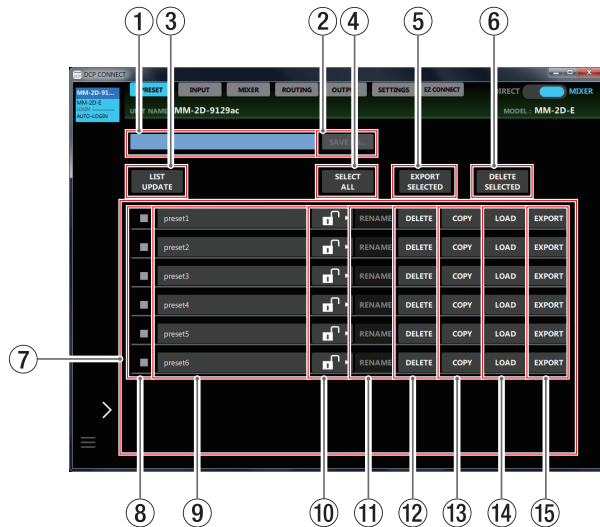
PRESET page

On the PRESET page, you can save the current Dante Compact Processor Series device settings as a preset and load saved settings.

The following settings are saved in presets.

- INPUT page
- MIXER page
- ROUTING page
- OUTPUT page
- EZ CONNECT page

A maximum of 50 presets can be saved.



NOTE

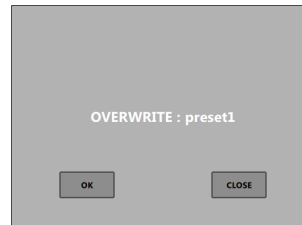
- When an AE-4D is being operated, the PRESET page will not be shown.
- Level meter movement might be delayed or stop depending on the network setup and Wi-Fi connection conditions.

① Preset naming field

Input the name for a new preset to be saved here.
Tap this area to make the cursor blink, enabling character input.
Up to 96 alphabetical letters can be input.

② Save button

The save button can be tapped after a name for the preset has been entered in the preset naming field (①).
Tapping this button will save the preset with the name input in the preset naming field (①).
If another preset has already been saved with that name, the following pop-up message will appear.



Tapping the **OK** button will overwrite the existing preset with the same name.

③ LIST UPDATE button

Tap this to update the preset list.

④ SELECT ALL button

This selects all presets shown in the preset list, putting checks (✓) into their selection mark boxes (⑧).

⑤ EXPORT SELECTED button (Windows/Mac versions only)

This saves the contents of all the presets that have checks (✓) in their selection boxes (⑧) in the "exported files" folder on the computer.

Tap this button to save files to the computer. The following pop-up message will appear.



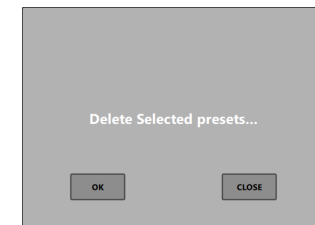
NOTE

- Exporting is not supported in the Android and iOS versions.
- Use this to back up presets and to copy them to other DCP Series devices.

⑥ DELETE SELECTED button

This deletes all the presets that have checks (✓) in their selection boxes (⑧).

Tap this button to open the following pop-up message.



Tap the **OK** button to delete the selected presets.

⑦ Preset list area

This shows a list of the saved presets.

⑧ Selection boxes

Put checks (✓) in these boxes to export the presets to files or to delete presets.

Tapping the **LIST UPDATE** button will clear all the selection check marks (✓).

2 - TASCAM DCP CONNECT


⑨ Preset names

These show the names set in the preset naming field (①).

Tap a preset name to enable editing it.

When the LOCK (⑩) icon is , the preset name can be changed.

⑩ LOCK sliders

Drag the  icon to the **DELETE** button to change it to , preventing preset name changing and preset deletion

⑪ RENAME buttons

After the preset name has been edited, the **RENAME** button becomes enabled.

In this state, tap the **RENAME** button to confirm the edited preset name.

⑫ DELETE buttons

This deletes the selected preset.

Tap this button to open the following pop-up message.

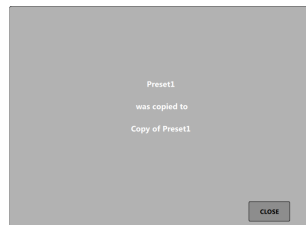


Tap the **OK** button to delete the selected preset.

⑬ COPY buttons

This copies the selected preset.

Tap this button to open the following pop-up message.



"Copy of" will be automatically added to the name of the copied preset.

⑭ LOAD buttons

Use to load a preset.

When loaded, the current settings of the device will become the same as those saved in the preset.

⑮ EXPORT buttons (Windows/Mac versions only)

Save the content of the selected preset to a file in the **"exported files"** folder on the computer.

Tap this button to save files to the computer. The following pop-up message will appear.



NOTE

- Exporting is not supported in the Android and iOS versions.
- Tap the **IMPORT** button on the **EXPORTED FILES** screen to import a preset file saved on the computer. (see "EXPORTED FILES screen" on page 25)

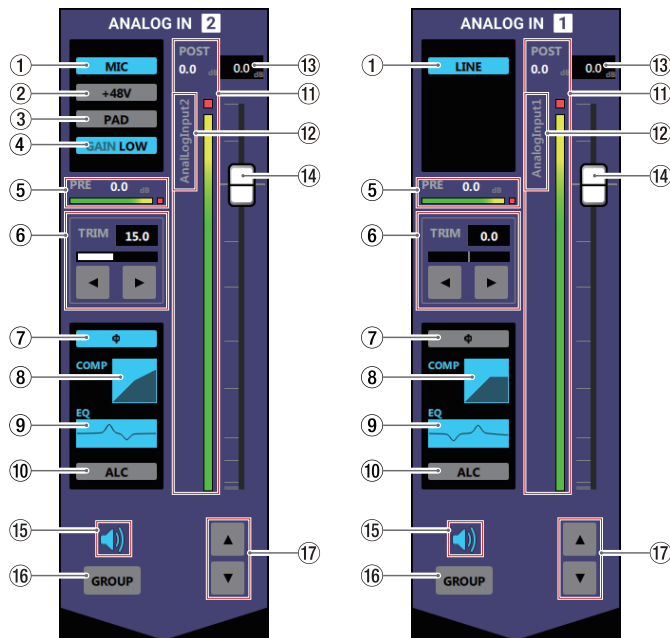
2 - TASCAM DCP CONNECT

INPUT page

The INPUT page shows information about the signals being input and can be used to make input settings.



Windows MM-2D-E INPUT page



INPUT page details

NOTE

- When an ML-4D/OUT-E or ML-4D/OUT-X is being operated, the INPUT page will not be shown.
- Tapping INPUT page areas ① - ⑩ on the INPUT page will open the Additional Input Settings screen. (see “Additional Input Settings screen” on page 14)
- Each level meter has an overload indicator at its top or far right.
- Level meter movement might be delayed or stop depending on the network setup and Wi-Fi connection conditions.

① Mic/line input setting status

This shows the MIC/LINE selection button setting on the Additional Input Settings screen.

② Phantom power supply setting status

When the MIC/LINE selection on the Additional Input Settings screen is *MIC*, this shows the phantom power on/off setting status.

When phantom power is on, *+48V* appears lit.

③ PAD setting status

When the MIC/LINE selection on the Additional Input Settings screen is *MIC*, this shows the pad on/off setting status.

When pad is on, *PAD* appears lit.

④ GAIN setting status

When the MIC/LINE selection on the Additional Input Settings screen is *MIC*, this shows the input gain setting status.

When the input gain setting is *HIGH*, *GAIN HIGH* appears lit, and when the setting is *LOW*, *GAIN LOW* appears lit.

⑤ PRE level value and meter

This shows the signal level before the channel fader as a decibel value and with a level meter.

⑥ TRIM level and slider setting status

This shows the TRIM slider setting on the Additional Input Settings screen.

This can be adjusted by tapping the number and inputting a value with a keyboard or by tapping the ◀ and ▶ buttons.

Input source	Range
Mic	MM-2D-E, MM-2D-X: 0 - 36.5, set in 0.5 intervals MM-4D/IN-E, MM-4D/IN-X: 0 - 33.0, set in 0.5 intervals
Line	-10 - +10, set in 0.5 intervals

⑦ PHASE setting status

This shows the *PHASE* setting on the Additional Input Settings screen.

This appears lit blue when the phase of the channel signal is reversed.

⑧ COMPRESSOR setting status

This shows the *COMPRESSOR* on/off status on the Additional Input Settings screen. The compressor setting is also shown as a graph.

When the compressor is on, this appears lit blue.

⑨ EQUALIZER setting status

This shows the *EQUALIZER* on/off status on the Additional Input Settings screen. The equalizer setting is also shown as a graph.

When the equalizer is on, this appears lit blue.

⑩ ALC setting status

This shows the automatic level control function on/off status. When the automatic level control function is on, this appears lit blue.

⑪ POST level meter

This shows the signal level after the channel fader as a decibel value and with a level meter.

⑫ Input name

This shows the name set on the Additional Input Settings screen in the Input Name setting field.

NOTE

When an AE-4D is being operated, tapping this area will open the *Change AES/EBU INPUT NAME* pop-up screen.

⑬ Channel fader level

This shows the level of the channel fader below it as a decibel value.

Range: *-inf*, -126.9 dB - +10 dB
(default: 0.0 dB, 0.1 dB intervals)

The channel fader send level can be set by tapping here and entering it with a keyboard.

⑭ Channel fader

Use this to adjust the level of the signal sent from the channel to the MIX channel and the ducking and ANC functions. Drag the channel fader up or down to adjust the channel level. The gain value of the channel fader is shown in the fader level display area (⑬).

NOTE

Double-tap the fader to set it to 0 dB.

2 - TASCAM DCP CONNECT

15 Mute button

Tap the button to mute that channel. The button appears unlit when muted. (Default: lit)

Tap the button to unmute that channel.

16 GROUP button

Tap the **GROUP** button to link the faders and mute buttons of channels that have been grouped. The **GROUP** button lights when activated. (Default: unlit)

NOTE

All channels can be grouped at the same time.

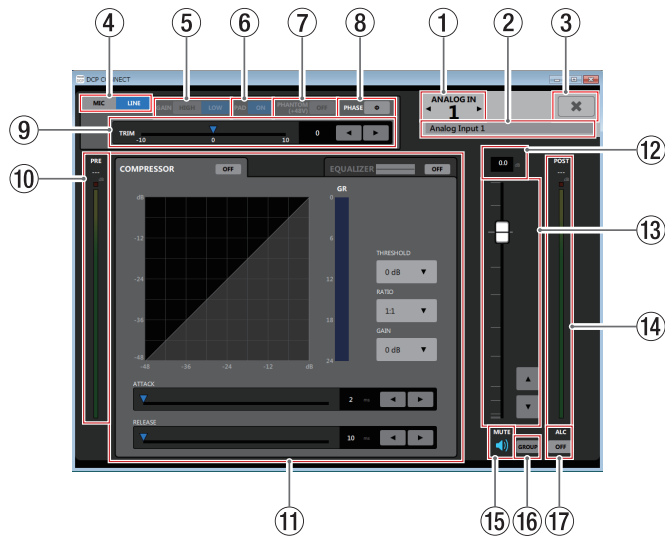
17 Channel fader adjustment buttons

Use these to adjust the level of the signal sent from the channel to the MIX channel and the ducking and ANC functions.

Tap the and buttons to adjust in 0.1dB intervals.

The gain value of the channel fader is shown in the fader level display area (13).

Additional Input Settings screen



NOTE

Level meter movement might be delayed or stop depending on the network setup and Wi-Fi connection conditions.

1 Input channel

This shows the channel number for the open Additional Input Settings screen.

Tap or to open the Additional Input Settings screen for an adjacent channel.

2 Input Name setting field

Set the input name to be shown on the INPUT page.

Tap this area to make the cursor blink, enabling character input. Up to 96 alphabetical letters can be input.

3 X button

Close the Additional Input Settings screen and return to the INPUT page.

4 MIC/LINE selection buttons

Use to select the input type for the channel.

The selected or button appears lit.

5 GAIN selection buttons

When MIC/LINE is set to **MIC**, channel input gain can be selected.

The selected or button appears lit.

6 PAD button

When MIC/LINE is set to **MIC**, the pad can be turned on/off for the channel.

When the pad function is on, the button appears lit and a -20 dB pad is applied to the signal.

7 PHANTOM (+48V) button

When MIC/LINE is set to **MIC**, phantom power can be turned on/off for the channel.

When phantom power is on, the button appears lit.

CAUTION

Set the output channel faders on the OUTPUT page to their minimum values before turning phantom power on/off. DepenLing on the connected mics, sudden loud noises from monitoring equipment could occur, and this could damage the equipment or harm hearing.

ATTENTION

- Do not turn phantom power on when connecting a mic that does not require phantom power.
- Do not connect or disconnect mics while phantom power is on. Doing so could cause a loud noise and might damage this unit and connected equipment.
- When using condenser mics that require phantom power and dynamic mics together, be sure to use balanced dynamic mics. Phantom power cannot be supplied to an unbalanced dynamic mic.

- Supplying phantom power to some ribbon mics will break them. If you are unsure, do not supply phantom power to a ribbon mic.

8 PHASE button

Use this to change the phase of the signals on the channel.

If the phase becomes reversed due to the wiring of a microphone or other cause, tap this button to reverse the phase of the input channel.

	Normal
	Reversed

9 TRIM slider

Use to adjust the input level of the channel.

Use the and buttons or drag to adjust the value, or tap the number and enter the value with a keyboard.

Input source	Range
Mic	MM-2D-E, MM-2D-X: 0 - 36.5, set in 0.5 intervals
	MM-4D/IN-E, MM-4D/IN-X: 0 - 33.0, set in 0.5 intervals
Line	-10 - +10, set in 0.5 intervals

10 PRE level meter

This shows the level of the signal before the compressor as a numerical decibel value.

11 COMPRESSOR/EQUALIZER tabs

Tap a tab to open the corresponding window. (see "COMPRESSOR tab" on page 15) (see "EQUALIZER tab" on page 16)

12 Fader level

This shows the level of the channel fader below it as a decibel value.

Range: *-inf*, -126.9 dB - +10 dB
(default: 0.0 dB, 0.1 dB intervals)

The channel fader send level can be set by tapping here and entering it with a keyboard.

2 - TASCAM DCP CONNECT

⑬ Channel fader

Use this to adjust the level sent to the MIX channel and the ducking and ANC functions.
Drag the channel fader up or down to adjust the channel level.
Tap the ▲ and ▼ buttons to adjust in 0.1dB intervals.
The gain value of the channel fader is shown in the fader level display area (⑫).

NOTE

Double-tap the fader to set it to 0 dB.

⑭ POST level meter

This shows the signal level after the channel fader as a decibel value and with a level meter.

⑮ Mute button

Tap the 🔊 button to mute. The 🔊 button appears unlit when muted. (Default: lit)
Tap the 🔊 button to unmute that channel.

⑯ GROUP button

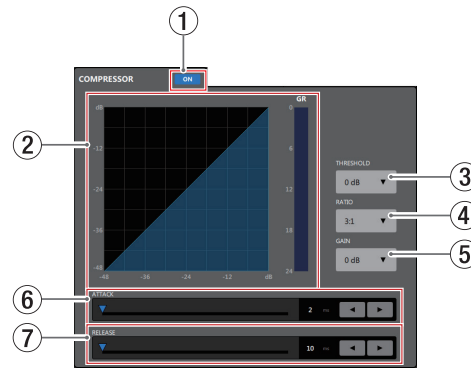
Tap the **GROUP** button to link the faders and mute buttons of channels that have been grouped. The **GROUP** button lights when activated. (Default: unlit)

⑰ ALC button

This turns the automatic level control function on/off.
When the automatic level control function is on, the **ON** button appears lit blue.

COMPRESSOR tab

When the input volume exceeds the THRESHOLD level, the input volume is compressed, reducing output volume variation.
For example, by reducing the levels of loud sounds, lower level sounds become relatively louder, creating a more even volume level throughout and a more sustained sound.



① Compressor ON/OFF button

Use this to turn the compressor on/off.
The **ON** button lights when on.

② Compressor status

Three meters show the compressor input signal level, output signal level and gain reduction level (**GR**).

NOTE

The graph appears blue when the compressor is on and gray when it is off.

③ THRESHOLD

Sets the threshold level that will cause the compressor to start.
Tap this to open a setting value list.

Range: -32 dB - 0 dB (default: 0 dB)

④ RATIO

Sets the compression ratio for the input volume.
Raising this value raises the compression ratio, increasing the amount of compression.
Tap this to open a setting value list.

Range: 1.0:1 - ∞:1 (default: 1.0:1)

⑤ GAIN

Sets the gain of the output signal.
When the volume is compressed, the output level becomes lower than the input level.
By using this to amplify the output signal, the level can be restored to close to the input level.
Tap this to open a setting value list.

Range: 0 dB - 20 dB (default: 0 dB)

⑥ ATTACK

This sets the time until the compression reaches the **RATIO** setting after the input volume exceeds the threshold.

Range: 2 ms - 200 ms (default: 2 ms)

To set the time, use the slider, keyboard input in the set time field, or the ◀ and ▶ buttons.

⑦ RELEASE

Sets the amount of time until the compression stops and the sound returns to its uncompressed level after the input sound goes below the threshold level.

Range: 10 ms - 1000 ms (default: 10 ms)

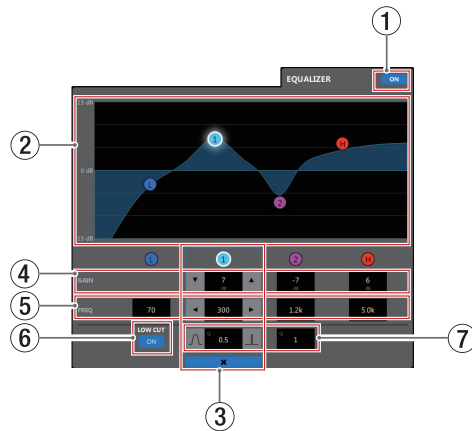
To set the time, use the slider, keyboard input in the set time field, or the ◀ and ▶ buttons.

2 - TASCAM DCP CONNECT

EQUALIZER tab

Use this to increase or decrease the levels of specific frequency ranges.

This can be used, for example, to enhance the sound of individual instruments, to adjust the balance of a wide frequency range and to cut specific unwanted frequencies.



The equalizer has a low shelf for low frequencies, peaking (bell shape) ① and ② for middle frequencies, and a high shelf for high frequencies.

① Equalizer ON/OFF button

Use this to turn the equalizer on/off.

When ON, the **ON** button lights and the EQ graph (2) appears blue.

② EQ graph

This shows the frequency response with the current equalizer settings.

The graph is shown even when the equalizer is off.

By tapping **L**, **①**, **②** or **H** in the EQ graph and then dragging it, the GAIN and FREQ of that band can be adjusted.

③ Band selection frame

By tapping the **L**, **①**, **②** or **H** in the EQ graph or above the GAIN values, you can select that band, showing the selection frame and enabling adjustment of its values.

Tap the **X** in the band selection frame to make it disappear.

④ GAIN (**L**/**①**/**②**/**H**)

Set how much the LOW, **①**, **②** and HIGH band levels are amplified or attenuated.

Range: ±12 dB (default: 0 dB)

Use the **▼** and **▲** buttons to set the values.

When the **LOW CUT** button (⑥) is **ON**, the low band gain cannot be set. The value fields can also be tapped to open setting value lists.

⑤ FREQ (**L**/**①**/**②**/**H**)

These set the cutoff frequencies of the LOW and HIGH bands and the middle frequencies of the **①** and **②** bands.

Ranges

- L**: 32 Hz - 1.6 kHz (default: 80 Hz)
- ①**: 32 Hz - 18.0 kHz (default: 300 Hz)
- ②**: 32 Hz - 18.0 kHz (default: 1.2 kHz)
- H**: 1.7 kHz - 18.0 kHz (default: 5 kHz)

Use the **◀** and **▶** buttons to set the values. The value fields can also be tapped to open setting value lists.

⑥ LOW CUT button

Tap the **LOW CUT** button so that **ON** appears lit, enabling the low cut filter that cuts noise and other sounds at low frequencies. (Default: unlit)

⑦ Q (**①**/**②**)

Set the acutenesses of the peaks of the **①** and **②** bands.

The higher the value the more acute it becomes, making it affect a narrower frequency band. The lower the value, the less acute it becomes, making it affect a broader frequency band.

Range: 0.25 - 16 (default: 1)

Use the **▲** and **▼** buttons to set the values. The value fields can also be tapped to open setting value lists.

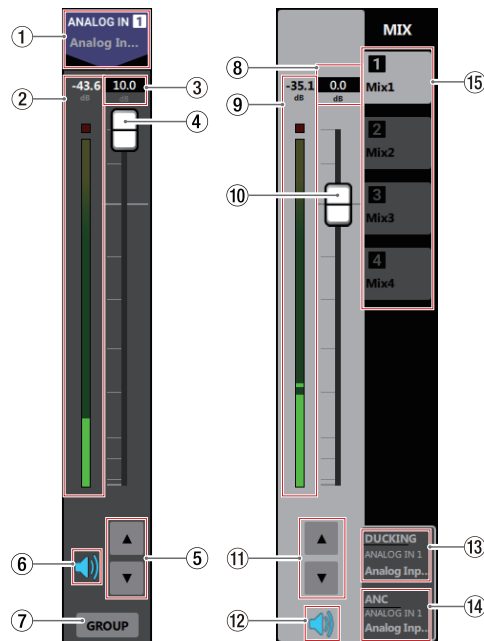
2 - TASCAM DCP CONNECT

MIXER page

Settings for each mixer channel on the MIXER page and settings on the Additional Mixer Settings screen can be made separately for each MIX tab.



Windows MM-2D-E MIXER page



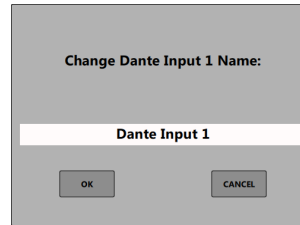
MIXER page details

NOTE

- The MIXER page is not shown when the mode switch is set to **DIRECT**.
- When an AE-4D is being operated, the MIXER page will not be shown.
- Each level meter has an overload indicator at its top.
- Level meter movement might be delayed or stop depending on the network setup and Wi-Fi connection conditions.
- The number of Dante channels that can be used with each Dante Compact Processor Series model differs depending on the sampling frequency. For details, see "⑦ SAMPLING FREQUENCY" in "SETTINGS page" on page 24.

① Input channel and signal name

This shows the INPUT channel name and the name set on the Additional Input Settings screen in the Input Name setting field. Tap a Dante input channel name to open a Dante channel name editing pop-up screen.



Tap this area to make the cursor blink, enabling character input.

Up to 96 alphabetical letters can be input.

NOTE

When the Dante input channel name is changed, the Channel Label that can be seen with Dante Controller will also be changed.

The number and types of characters that can be used for the Dante input channel name and Channel Label are limited.

If the Dante input channel name exceeds the Channel Label limits, it will be changed automatically.

For details about the Channel Label limits, see the Dante Controller Operation Manual.

② MIX level meter

The signal level sent to the MIX bus selected from the MIX tabs (15) is shown as a digital value and by the level meter.

③ MIX channel fader level

This shows the level of the channel fader below it as a decibel value.

Range: *-inf*, -126.9 dB - +10 dB (default: 0.0 dB, 0.1 dB intervals)

The channel fader send level can be set by tapping here and entering it with a keyboard.

④ MIX channel fader

This adjusts the signal level sent to the MIX bus selected from the MIX tabs (15). Drag the MIX channel fader up or down to adjust the channel level.

The gain value of the MIX channel fader is shown in the fader level display area (3).

NOTE

Double-tap the fader to set it to 0 dB.

⑤ MIX channel fader adjustment buttons

Tap the ▲ and ▼ buttons to adjust the MIX channel fader in 0.1dB intervals.

⑥ Mute button

Tap the button to mute the signal of the channel sent to the MIX bus. The button becomes unlit when muted. (Default: lit)

Tap the button to unmute.

⑦ GROUP button

Tap the **GROUP** button to link the faders and mute buttons of channels that have been grouped. The **GROUP** button lights when activated. (Default: unlit)

NOTE

All channels can be grouped at the same time.

⑧ MIX master fader level

This shows the level of the MIX master fader below it as a decibel value.

Range: *-inf*, -126.9 dB - +10 dB (default: 0.0 dB, 0.1 dB intervals)

The master fader send level can be set by tapping here and entering it with a keyboard.

⑨ MIX master level meter and value

This shows the signal level of the MIX master fader as a decibel value and with a level meter.

2 - TASCAM DCP CONNECT

⑩ MIX master fader

Use to adjust the level sent to the output channel on the OUTPUT page.
 Drag the MIX master fader up or down to adjust the channel level.
 The gain value of the MIX master fader is shown in the fader level display area (⑧).

NOTE

Double-tap the fader to set it to 0 dB.

⑪ MIX master fader adjustment buttons

Tap the ▲ and ▼ buttons to adjust the MIX master fader in 0.1 dB intervals.

⑫ Mute button

Tap the 🔊 button to mute the MIX master channel. (Default: lit)
 Tap the 🔇 button to unmute that channel.

⑬ Ducking function setting status

This shows the ducking function on/off status and the name of the source used for this function, which are set on the Additional Mixer Settings screen.

DUCKING and the source name appear lit when the ducking function is on.

Tap this area to open the Additional Mixer Settings screen.

⑭ ANC function setting status

This shows the ANC function on/off status and the name of the source used for this function, which are set on the Additional Mixer Settings screen.

ANC and the source name appear lit when the ANC function is on.

Tap this area to open the Additional Mixer Settings screen.

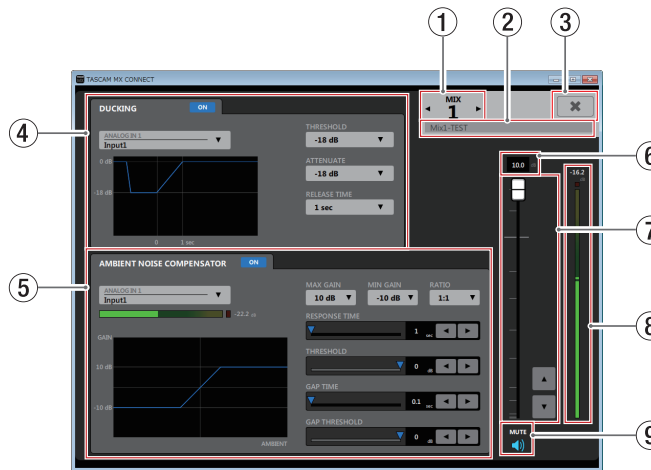
⑮ MIX selection tabs

Mix channels can be set for each MIX tab.

The MIX tabs show the names set on the Additional Mixer Settings screen in the MIX Name field.

Tap this area to switch MIX tabs.

Additional Mixer Settings screen



① MIX number

This shows the MIX number for the open Additional Mix Settings screen.

Tap ◀ or ▶ to open the Additional Mix Settings screen for an adjacent channel.

② MIX name setting field

Set the name shown on the MIX tab on the MIX and ROUTING pages.

Tap this area to make the cursor blink, enabling character input.

Up to 96 alphabetical letters can be input.

③ ✕ button

Use this to close the Additional Mixer Settings screen and return to the MIXER page.

④ Ducking function settings area

This sets the ducking function for the open Mix.

⑤ ANC function settings area

This sets the ANC function for the open Mix.

⑥ MIX master fader level

This shows the level of the MIX master fader below it as a decibel value.

Range: *-inf*, -126.9 dB - +10 dB
 (default: 0.0 dB, 0.1 dB intervals)

The MIX master fader level can be set by tapping here and entering it with a keyboard.

⑦ MIX master fader

Use to adjust the level sent to the output channel on the OUTPUT page.

Drag the MIX master fader up or down to adjust the channel level.

Tap the ▲ and ▼ buttons to adjust in 0.1 dB intervals.

The gain value of the MIX master fader is shown in the fader level display area (⑧).

NOTE

Double-tap the fader to set it to 0 dB.

⑧ MIX master level meter

This shows the signal level of the MIX master fader as a decibel value and with a level meter.

NOTE

Level meter movement might be delayed or stop depending on the network setup and Wi-Fi connection conditions.

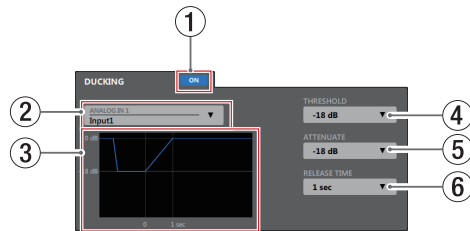
⑨ Mute button

Tap the 🔊 button to mute the MIX master channel. (Default: lit)
 Tap the 🔇 button to unmute that channel.

2 - TASCAM DCP CONNECT

DUCKING settings area

When a mic signal is input, the ducking function can automatically lower the volume of background music or other sound input through the line input channels.



① Ducking function ON/OFF button

This turns the ducking function on and off. When on, the **ON** button lights and the graph (③) appears blue.

② Ducking function source selection

Use this to select the mic input source for the ducking function. The selected source will be mixed in as background music.

Tap this to open a list of sources.

③ Ducking function illustration

This shows how the **ATTENUATE** and **RELEASE TIME** settings affect the ducking level.

④ THRESHOLD

Ducking is activated when the ducking function source (②) exceeds this set level.

For example, to use the ducking function when the mic input level is low, set this parameter to a low value (-30 dBFS is the minimum).

Tap this to open a setting value list.

Settings: -30 dB, -24 dB, -18 dB, -12 dB, -6 dB (default)

⑤ ATTENUATE

This sets the amount that the background music volume level will be reduced.

Tap this to open a setting value list.

Settings: -3 dB (default), -6 dB, -9 dB, -12 dB, -18 dB, -24 dB, -inf. dB

⑥ RELEASE TIME

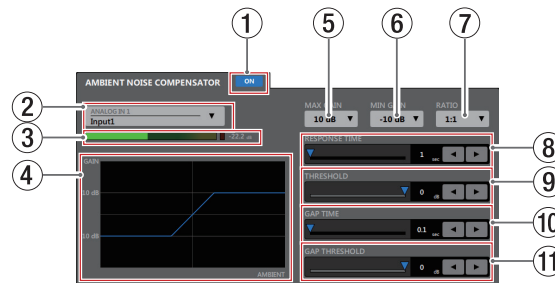
This sets the amount of time until the background music volume returns to normal after the mic input goes below the **THRESHOLD** level.

Tap this to open a setting value list.

Settings: 0.1 sec (default), 0.5 sec, 1 sec, 1.5 sec, 2 sec, 2.5 sec, 3 sec, 3.5 sec, 4 sec, 4.5 sec, 5 sec

ANC settings area

The Ambient Noise Compensator (ANC) function can measure ambient noise and automatically adjust the volume to make the main sound source easier to hear.



① ANC function ON/OFF button

This turns the ANC function on and off.

When on, the **ON** button lights and the graph (④) appears blue.

② ANC function source selection

Use this to select the ambient noise source to be measured by the ANC function.

Tap this to open a list of sources.

③ POST level meter

This shows the signal level after the INPUT page channel fader as a decibel value and with a level meter.

NOTE

Level meter movement might be delayed or stop depending on the network setup and Wi-Fi connection conditions.

④ ANC function illustration

This shows the level change of the ANC function.

⑤ MAX GAIN

This sets the ANC function gain maximum value.

Tap this to open a setting value list.

Settings: 0 dB - 20 dB (10 dB default, 1 dB increments)

⑥ MIN GAIN

This sets the ANC function gain minimum value.

Tap this to open a setting value list.

Settings: -20 dB - 0 dB (-10 dB default, 1 dB increments)

⑦ RATIO

This sets the gain compression ratio of the ANC function.

Tap this to open a setting value list.

Settings: 0.5:1, 0.6:1, 0.7:1, 0.8:1, 0.9:1, 1:1 (default), 1.1:1, 1.2:1, 1.3:1, 1.4:1, 1.5:1, 1.6:1, 1.7:1, 1.8:1, 1.9:1, 2:1

⑧ RESPONSE TIME

This sets the response time for gain adjustment of the main sound.

Settings: 1 sec - 60 sec (1 sec default, 1 sec increments)

To set the time, use the slider, the set time field, or the ◀ and ▶ buttons.

⑨ THRESHOLD

This sets the average ambient noise level (threshold level).

Settings: -60 dB - 0 dB (0 dB default, 1 dB increments)

To set the time, use the slider, the set time field, or the ◀ and ▶ buttons.

⑩ GAP TIME

This sets the time that determines a gap (silence).

Settings: 0.1 sec - 10 sec
(0.1 sec default, 0.1 sec increments)

To set the time, use the slider, the set time field, or the ◀ and ▶ buttons.

⑪ GAP THRESHOLD

Set the main sound threshold level.

When the main sound stays below this level continuously for the set GAP TIME, a gap (silence) will be recognized.

During the gap, the ambient noise level will be measured and the ANC gain determined.

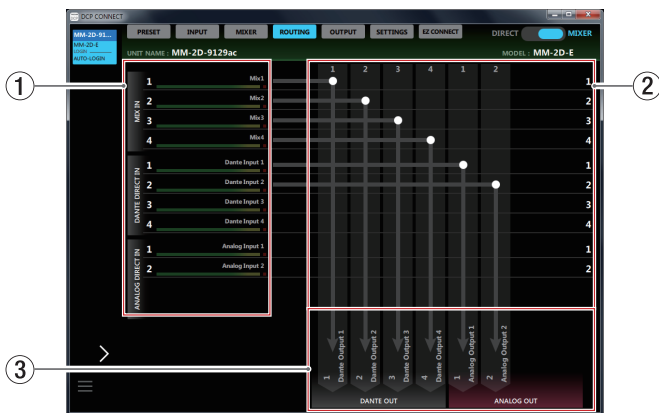
Settings: -60 dB - 0 dB (0 dB default, 1 dB increments)

To set the time, use the slider, the set time field, or the ◀ and ▶ buttons.

2 - TASCAM DCP CONNECT

ROUTING page

Audio signals from MIX, DANTE IN and ANALOG IN sources can be individually routed to DANTE OUT and ANALOG OUT outputs.



NOTE

- The ROUTING page will not be shown when the mode switch is set to **DIRECT**.
- When an AE-4D is being operated, the ROUTING page will not be shown.
- The number of Dante channels that can be used with each Dante Compact Processor Series model differs depending on the sampling frequency. For details, see “⑦ SAMPLING FREQUENCY” in “SETTINGS page” on page 24.

① Input source names and level meters

This shows the names and level meters of the input sources.

NOTE

Level meter movement might be delayed or stop depending on the network setup and Wi-Fi connection conditions.

② Routing setting area

Use this to set the output routings from input sources to output channels.

Tap intersections between areas ① and ③ on the ROUTING page to change output routings. Routings can also be cut by double-tapping intersections.

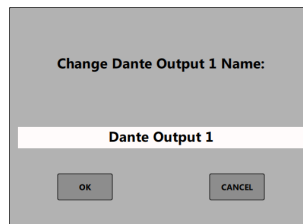
NOTE

- A single input source can be output from multiple output channels.
- Multiple input sources cannot be output from the same output channel.

③ Output channels and signal names

This shows the output channel names from the OUTPUT page and the output names set in the Output Name setting fields on the Additional Output Settings screens.

Tap a Dante output channel name to open a Dante channel name editing pop-up screen.



Tap this area to make the cursor blink, enabling character input.

Up to 96 alphabetical letters can be input.

NOTE

When the Dante output channel name is changed, the Channel Label that can be seen with Dante Controller will also be changed.

The number and types of characters that can be used for the Dante output channel name and Channel Label are limited.

If the Dante output channel name exceeds the Channel Label limits, it will be changed automatically.

For details about the Channel Label limits, see the Dante Controller Operation Manual.

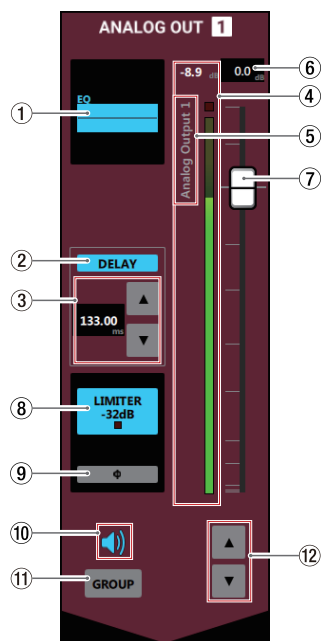
2 - TASCAM DCP CONNECT

OUTPUT page

The OUTPUT page shows information about the signals output from the ANALOG OUT jacks on the Dante Compact Processor Series device and can be used to make related settings.



Windows MM-2D-E OUTPUT page



MIXER page details

NOTE

- When an MM-4D/IN-E or MM-4D/IN-X is being operated, the OUTPUT page will not be shown.
- Tap area ① - ③, ⑧ or ⑨ on the OUTPUT page to open the Additional Output Settings Screen.
- Level meter movement might be delayed or stop depending on the network setup and Wi-Fi connection conditions.

① EQUALIZER setting status

This shows the *EQUALIZER* on/off status on the Additional Output Settings screen. The equalizer setting is also shown as a graph.

When the equalizer is on, this appears lit blue.

② Delay setting status

This shows the *DELAY* on/off status on the Additional Output Settings screen.

When the delay function is on, this appears lit blue.

③ Delay setting status

Set the delay time.

Range: 0 msec - 300 msec (0.02msec increments)

This can be adjusted by tapping the number and inputting a value with a keyboard or by tapping the ▲ and ▼ buttons.

④ Output channel level meter

This shows the signal level of the output channel as a decibel value and with a level meter.

NOTE

Each level meter has an overload indicator at its top.

⑤ Output name

This shows the name set on the Additional Output Settings screen in the Output Name setting field.

⑥ Fader level

This shows the level of the output channel fader below it as a decibel value.

Range: *-inf*, -126.9 dB - +10 dB
(default: 0.0 dB, 0.1 dB intervals)

The channel fader send level can be set by tapping here and entering it with a keyboard.

⑦ Output channel fader

Use this to adjust the level of the output channel signal sent to the output jack.

Drag the output channel fader up or down to adjust the output level.

The gain value of the output channel fader is shown in the fader level display area (⑥).

NOTE

Double-tap the fader to set it to 0 dB.

⑧ LIMITER function setting status/indicator

This shows the *LIMITER* on/off status on the Additional Output Settings screen.

When the limiter function is on, this appears lit blue.

When the LIMITER function is affecting the signal, the indicator lights red.

⑨ PHASE setting status

This shows the *PHASE* setting on the Additional Output Settings screen.

This appears lit blue when the phase of the channel signal is reversed.

⑩ Mute button

Tap the 🔊 button to mute that channel. The 🔊 button appears unlit when muted. (Default: lit)

Tap the 🔊* button to unmute that channel.

⑪ GROUP button

Tap the *GROUP* button to link the faders and mute buttons of channels that have been grouped. The *GROUP* button lights when activated. (Default: unlit)

NOTE

All channels can be grouped at the same time.

⑫ Output channel fader adjustment buttons

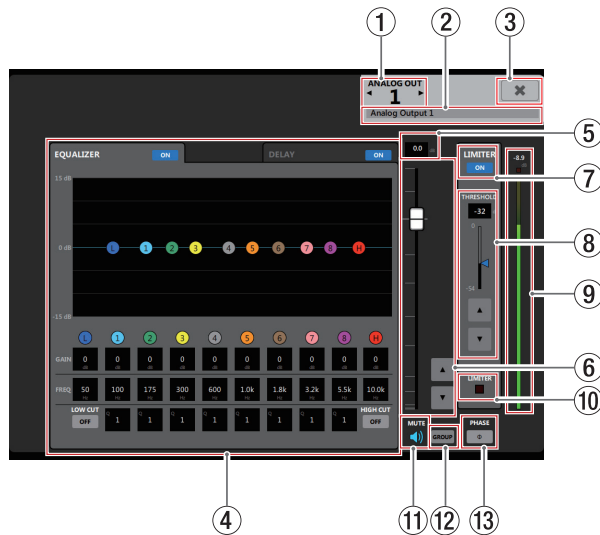
Use this to adjust the level of the output channel signal sent to the output jack.

Tap the ▲ and ▼ buttons to adjust in 0.1dB intervals.

The gain value of the output channel fader is shown in the fader level display area (⑥).

2 - TASCAM DCP CONNECT

Additional Output Settings screen



① OUTPUT channel

This shows the channel number for the open Additional Output Settings screen.

Tap ◀ or ▶ to open the Additional Output Settings screen for an adjacent channel.

② Output Name setting field

Set the output name to be shown on the OUTPUT page.

Tap this area to make the cursor blink, enabling character input.

Up to 96 alphabetical letters can be input.

③ ✕ button

Close the Additional Output Settings screen and return to the Output page.

④ EQUALIZER/DELAY tabs

Tap a tab to open the corresponding window.

⑤ Fader level

This shows the level of the output channel fader below it as a decibel value.

Range: *-inf, -126.9 dB - +10 dB*
(default: 0.0 dB, 0.1 dB intervals)

The channel fader send level can be set by tapping here and entering it with a keyboard.

⑥ Output channel fader

Use this to adjust the level of the output channel signal sent to the output jack.

Drag the output channel fader up or down to adjust the output level.

Tap the ▲ and ▼ buttons to adjust in 0.1 dB intervals.

The gain value of the output channel fader is shown in the fader level display area (⑦).

NOTE

Double-tap the fader to set it to 0 dB.

⑦ LIMITER button

Press this button to turn the limiter function ON/OFF.

When the limiter function is on, the **ON** button appears lit.

⑧ THRESHOLD setting status

Set the threshold level, which is the level when the limiter starts operating.

Range: *-54 dB - 0 dB* (0 dB default, 1 dB increments)

To set this, use keyboard input in the setting level display area, the slider, or the ▲ and ▼ buttons.

⑨ Output channel level meter

This shows the signal level of the output channel as a decibel value and with a level meter.

NOTE

Level meter movement might be delayed or stop depending on the network setup and Wi-Fi connection conditions.

⑩ LIMITER indicator

When the LIMITER function is affecting the signal, the indicator lights red.

⑪ Mute button

Tap the 🔊 button to mute that channel. The 🔊 button appears unlit when muted. (Default: lit)

Tap the 🔊✕ button to unmute that channel.

⑫ GROUP button

Tap the **GROUP** button to link the faders and mute buttons of channels that have been grouped. The **GROUP** button lights when activated. (Default: unlit)

NOTE

All channels can be grouped at the same time.

⑬ PHASE button

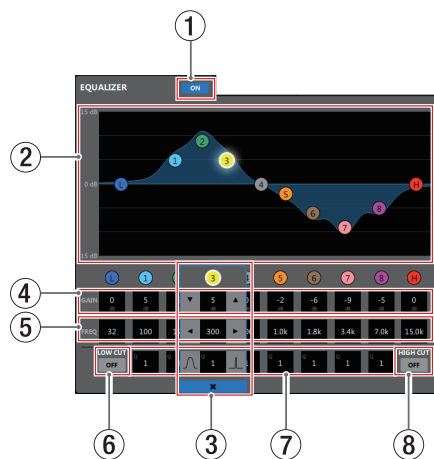
Use this to change the phase of the signal on the output channel.

Tap this button to reverse the phase of the output channel.

<input type="radio"/>	Normal
<input checked="" type="radio"/>	Reversed

2 - TASCAM DCP CONNECT

EQUALIZER tab



① Output equalizer on/off button

Use this to turn the output equalizer on/off. The **ON** button lights when on.

② EQ graph

This shows the frequency response with the current equalizer settings.

The graph is shown even when the equalizer is off.

By tapping **L**, **1**, **2**, **3**, **4**, **5**, **6**, **7**, **8** or **H** in the EQ graph and then dragging it, the GAIN and FREQ of that band can be adjusted.

③ Band selection frame

By tapping the **L**, **1**, **2**, **3**, **4**, **5**, **6**, **7**, **8** or **H** in the EQ graph or above the **GAIN** values, you can select that band, showing the selection frame and enabling adjustment of its values.

Tap the **✖** in the band selection frame to make it disappear.

④ GAIN (**L**, **1**, **2**, **3**, **4**, **5**, **6**, **7**, **8**, **H**)

Set how much the LOW, **1**, **2**, **3**, **4**, **5**, **6**, **7**, **8** and HIGH band levels are amplified or attenuated.

Range: ±12 dB (default: 0 dB)

Use the **▼** and **▲** buttons to set the values. The value fields can also be tapped to open setting value lists.

Low gain cannot be set when the low-cut filter is on. High gain cannot be set when the high-cut filter is on.

⑤ FREQ (**L**, **1**, **2**, **3**, **4**, **5**, **6**, **7**, **8**, **H**)

These set the cutoff frequencies of the LOW and HIGH bands and the middle frequencies of the **1**, **2**, **3**, **4**, **5**, **6**, **7** and **8** bands.

Ranges

- L**: 32 Hz - 1.6 kHz (when low-cut filter off, 80 Hz default)
32 Hz - 18.0 kHz (when low-cut filter on, 80 Hz default)
- 1**: 32 Hz - 18.0 kHz (default: 100 Hz)
- 2**: 32 Hz - 18.0 kHz (default: 175 Hz)
- 3**: 32 Hz - 18.0 kHz (default: 300 Hz)
- 4**: 32 Hz - 18.0 kHz (default: 600 Hz)
- 5**: 32 Hz - 18.0 kHz (default: 1.0 kHz)
- 6**: 32 Hz - 18.0 kHz (default: 1.8 kHz)
- 7**: 32 Hz - 18.0 kHz (default: 3.2 kHz)
- 8**: 32 Hz - 18.0 kHz (default: 5.5 kHz)
- H**: 1.8 kHz - 18.0 kHz (when high-cut filter off, 10.0 kHz default)
32 Hz - 18.0 kHz (when high-cut filter on, 10.0 kHz default)

Use the **◀** and **▶** buttons to set the values. The value fields can also be tapped to open setting value lists.

⑥ LOW CUT button

Tap the **LOW CUT** button so that **ON** appears lit, enabling the low cut filter that cuts noise and other sounds at low frequencies. (Default: unlit)

⑦ Q (**1**, **2**, **3**, **4**, **5**, **6**, **7**, **8**)

Set the acutenesses of the peaks of the **1**, **2**, **3**, **4**, **5**, **6**, **7** and **8** bands.

The higher the value the more acute it becomes, making it affect a narrower frequency band. The lower the value, the less acute it becomes, making it affect a broader frequency band.

Range: 0.25 - 16 (default: 1)

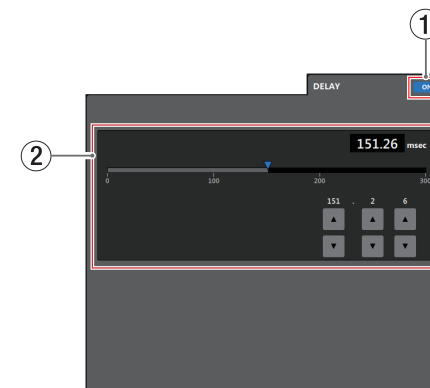
Use the **◻** and **◻** buttons to set the values. The value fields can also be tapped to open setting value lists.

⑧ HIGH CUT button

Tap the **HIGH CUT** button so that **ON** appears lit, enabling the high cut filter that cuts noise and other sounds at high frequencies. (Default: unlit)

DELAY tab

Use to adjust the delay of output channel signals.



① Delay function ON/OFF button

This turns the delay function on and off.

When the delay function is on, the **ON** button appears lit.

② Delay setting

Set the delay time.

Range: 0 msec - 300 msec (0.02msec increments)

To set the time, use the slider, the set time field, or the **▼** and **▲** buttons.

2 - TASCAM DCP CONNECT

SETTINGS page

The SETTINGS page shows the status of the connected Dante Compact Processor Series device and can be used to make related settings.



① UNIT NAME

This shows the name of the Dante Compact Processor Series device used as the **UNIT NAME** in the tab area.

Tap this area to make the cursor blink, enabling character input.

Up to 96 alphabetical letters can be input.

NOTE

When the UNIT NAME is changed, the Device Name that can be seen with Dante Controller will also be changed.

The number and types of characters that can be used for the UNIT NAME and Channel Label are limited.

If the UNIT NAME exceeds the Device Name limits, it will be changed automatically.

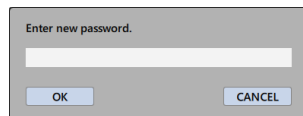
For details about the Device Name limits, see the Dante Controller Operation Manual.

② FIRMWARE VERSION

This is the firmware version used by the connected Dante Compact Processor Series device unit.

③ PASSWORD

To change the login screen password, tap the **CHANGE** button to open the **Enter new password.** pop-up window.



In addition to uppercase and lowercase alphabet letters and numbers, the following characters can also be used.

() [] { } ! @ # \$ % & . , ; _ ' ` ^ ~

The maximum number of characters is 20 .

NOTE

The password is blank when unit is shipped new.

If no password is set, settings will not be protected.

④ SERIAL No.

This is the serial number of the connected Dante Compact Processor Series device.

⑤ UNIT SEARCH

Tap the **IDENTIFY** button to make the **STATUS** indicator on the connected Dante Compact Processor Series device blink. Tap again to stop the blinking.

⑥ LED BRIGHTNESS

This sets the brightness of the indicators on the front of the connected Dante Compact Processor Series device.

Range: 0 - 8 (default: 1)

Tap this to open a setting value list.

⑦ SAMPLING FREQUENCY

This shows the sampling frequency used by the connected Dante Compact Processor Series device.

The unit usually operates at 48 kHz.

To change the sampling frequency, use Dante Controller.

For details, see “Changing sampling frequencies and bit depths with Dante Controller” in the Owner’s Manual for the connected Dante Compact Processor Series device.

Note that the number of Dante channels that can be used with each Dante Compact Processor Series model differs depending on the set sampling frequency.

When the sampling frequency is 44.1/48 kHz

	DANTE IN	DANTE OUT
AE-4D	4 channels	4 channels
ML-4D/OUT-E		
ML-4D/OUT-X		
MM-2D-E		
MM-2D-X		
MM-4D/IN-E		
MM-4D/IN-X		

When the sampling frequency is 88.2/96 kHz

	DANTE IN	DANTE OUT
AE-4D	2 channels	2 channels
ML-4D/OUT-E	4 channels	No output
ML-4D/OUT-X		
MM-2D-E	2 channels	2 channels
MM-2D-X		
MM-4D/IN-E	No input	4 channels
MM-4D/IN-X		

⑧ REFERENCE LEVEL

This sets the analog output headroom (difference between the maximum level and the reference level) of the connected Dante Compact Processor Series device.

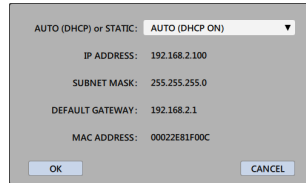
Settings: 15 dBu, 18 dBu, 20 dBu, 22 dBu, 24 dBu (default)

Tap this to open a setting value list.

2 - TASCAM DCP CONNECT

⑨ NETWORK SETTING

Tap the **CHANGE** button to open the network settings pop-up screen.



When set to **AUTO (DHCP ON)**

If DHCP is set to **STATIC (DHCP OFF)**, IP ADDRESS, SUBNET MASK and DEFAULT GATEWAY can be entered manually. Click the **OK** button to confirm changes to network settings.

⑩ EXPORTED FILES

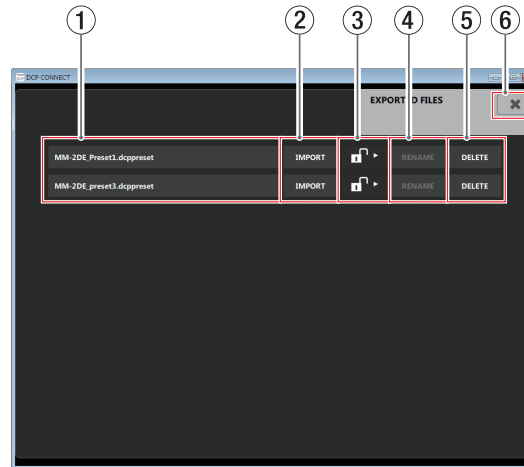
Tap the **OPEN** button to open the **EXPORTED FILES** screen that shows files exported from the **PRESET** screen. (see "EXPORTED FILES screen" on page 25)

⑪ GPI SETTINGS (only for Euroblock balanced models)

Tap the **OPEN** button to open the **GPI SETTING** screen. (see "GPI SETTING screen" on page 26)

EXPORTED FILES screen

Use this screen to manage preset files that have been saved on the computer.



NOTE

- Exporting is not supported in the Android and iOS versions.
- When an AE-4D is being operated, the **EXPORTED FILES** screen will not be shown.
- Importing preset files might not be possible if the importing device is of a different type than the exporting device.
- Importing preset files might not be possible if the Dante Compact Processor Series device firmware version used when exporting is different from that used by the importing device.

① Preset file names

This shows the names of exported preset files.

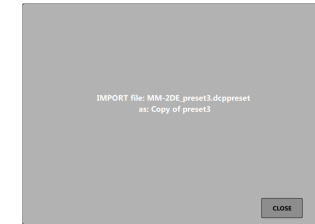
Tap a preset name to enable editing it.

When the LOCK (②) icon is , the preset name can be changed.


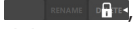
② IMPORT button

Import the selected preset file into the Dante Compact Processor Series device.

Tap this button to import the preset file and open the following message.



③ LOCK slider

Drag the  icon to the **DELETE** button to change it to , preventing preset name changing and preset deletion.

④ RENAME button

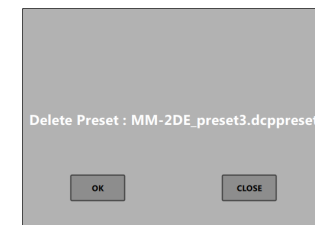
After the preset file name has been edited, the **RENAME** button becomes enabled.

In this state, tap the **RENAME** button to confirm the edited preset file name.

⑤ DELETE button

This deletes the selected preset file.

Tap this button to open the following pop-up message.



Tap the **OK** button to delete the selected preset file.

⑥ ✕ button

This closes the **EXPORTED FILES** screen and reopens the **SETTINGS** screen.

2 - TASCAM DCP CONNECT

GPI SETTING screen

Make external control connector settings for the analog input and output connectors.



NOTE

When an AE-4D, ML-4D/OUT-X, MM-2D-X or MM-4D/IN-X is being operated, the GPI SETTING screen will not be shown.

① TERMINAL 1-4 tabs

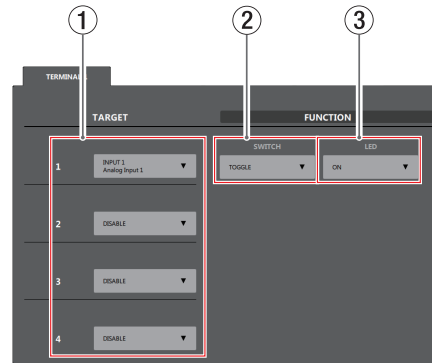
Tap a tab to open the corresponding window.

(see "Analog input and external control terminal settings tab" on page 26) (see "Analog output and external control terminal settings tab" on page 26)

② ✕ button

This closes the *GPI SETTING* screen and reopens the *SETTINGS* screen.

Analog input and external control terminal settings tab



① Target selection fields

Select channels to mute.

Tap this area to open a target list.

A maximum of 4 channels can be targeted with one control terminal.

② SWITCH setting

Tap the button to set the mute operation.

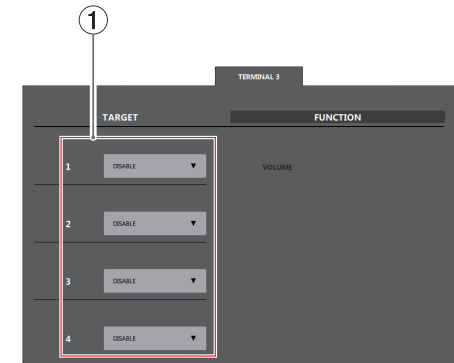
Settings: *TOGGLE, HOLD ON, HOLD OFF*

③ LED setting

Set the indicator illumination status when muted.

Settings: *OFF* (indicator unlit when muted)
ON (indicator lit when muted)

Analog output and external control terminal settings tab



① Target selection fields

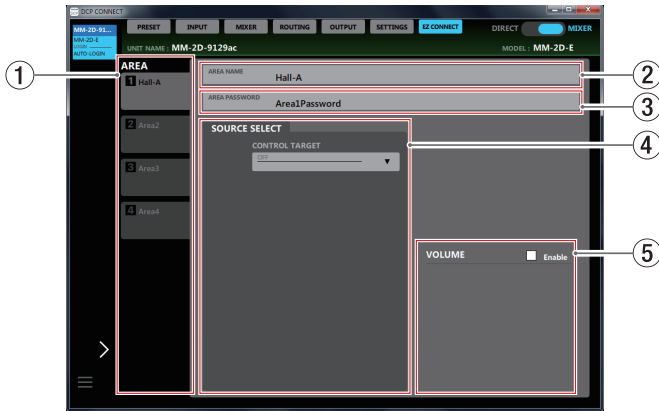
Select the objects of fader control.

Tap this area to open a target list.

2 - TASCAM DCP CONNECT

EZ CONNECT page

On the EZ CONNECT page, the operation details can be set for TASCAM EZ CONNECT, which is designed for end-users. Up to 4 areas can be set.



NOTE

- The EZ CONNECT page is not shown when the mode switch is set to **DIRECT**.
- When an AE-4D is being operated, the EZ CONNECT page will not be shown.

Download the TASCAM EZ CONNECT installer from the TEAC Global Site (<http://teac-global.com>) and install the software. For details about installation, see “Installing the dedicated software” on page 4.

① AREA selection tabs

Operation details for TASCAM EZ CONNECT can be set separately for each AREA tab.

These show the names set in the AREA NAME setting fields.

Tap this area to switch AREA tabs.

② AREA NAME setting field

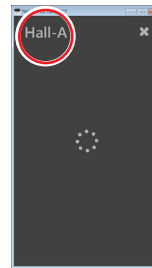
Set the name shown on the AREA tab on the EZ CONNECT page.

Tap this area to make the cursor blink, enabling character input.

Up to 96 alphabetical letters can be input.

NOTE

The name set here will also be shown in the TASCAM EZ CONNECT app. (see “TASCAM EZ CONNECT can be connected with the following Dante Compact Processor Series devices.” on page 28)



③ AREA PASSWORD setting field

This sets the password used to log in to TASCAM EZ CONNECT. (see “TASCAM EZ CONNECT can be connected with the following Dante Compact Processor Series devices.” on page 28)

The AREA password can be set separately for each AREA tab. The same password as used by another area cannot be set. Tap this area to make the cursor blink, enabling character input.

In addition to uppercase and lowercase alphabet letters and numbers, the following characters can also be used.

()[]{}!@#\$%&.,;_`^~

The maximum number of characters is 16.

NOTE

The number of characters that can be used for the password is different from the **PASSWORD** item on the SETTINGS page.

④ SOURCE SELECT setting area

Set the source selections operated using TASCAM EZ CONNECT. (see “Setting the SOURCE SELECT area” on page 29)

⑤ VOLUME setting area

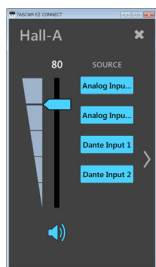
Select the volume adjusted by TASCAM EZ CONNECT. (see “Setting the Volume Screen” on page 30)

3 - TASCAM EZ CONNECT

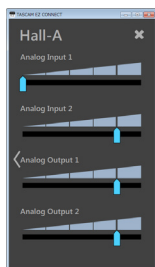
TASCAM EZ CONNECT is control software with a simple and easy to understand interface designed for end-users.

With source selection and volume screens, the control contents can be customized using TASCAM DCP CONNECT.

By assigning only the necessary functions, unintended operation mistakes and trouble by end users can be avoided, enabling facility managers to use it with peace of mind.



Source Selection Screen



Volume Screen

When the Source Selection Screen is open, tap > to open the Volume Screen.

When the Volume Screen is open, tap < to open the Source Selection Screen.

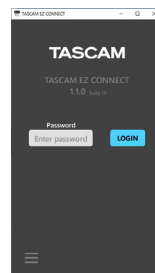
NOTE

- Items that have been enabled on the TASCAM DCP CONNECT EZ CONNECT page can be accessed on the TASCAM EZ CONNECT source selection screen. Items will not be shown if the following settings are made on the EZ CONNECT page.
 - **CONTROL TARGET** is set to **OFF**
 - A source is set for **CONTROL TARGET**, but the input source is **OFF**
- If the EZ CONNECT page VOLUME setting area (5) **Enable** does not have a check mark (✓), the Volume Screen will not appear in TASCAM EZ CONNECT. Moreover, if all the volume settings are **OFF**, the Volume Screen will not appear in TASCAM EZ CONNECT.

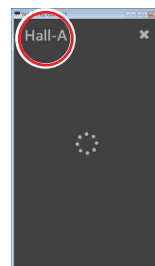
TASCAM EZ CONNECT can be connected with the following Dante Compact Processor Series devices.

The AREA tab contents set using TASCAM DCP CONNECT are saved in the Dante Compact Processor Series device. Using this setting information, TASCAM EZ CONNECT can connect to the Dante Compact Processor Series device.

1. The login screen will appear when TASCAM EZ CONNECT is launched.



2. Input the AREA password for the area that you want to log into and tap the **LOGIN** button. (see "EZ CONNECT page" on page 27) After logging into TASCAM EZ CONNECT, the name set in the AREA NAME setting field on the EZ CONNECT page will be shown.



NOTE

- To log out, tap the ✕ at the top right of the screen that appears after logging in.
- Both TASCAM DCP CONNECT and TASCAM EZ CONNECT can be logged into a Dante Compact Processor Series device at the same time. TASCAM EZ CONNECT will be logged out automatically, however, if settings are changed on the EZ

CONNECT page in TASCAM DCP CONNECT.

Using TASCAM EZ CONNECT in demo mode

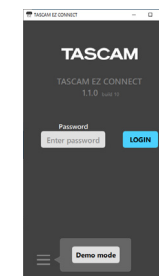
In demo mode, TASCAM EZ CONNECT can be tried without a Dante Compact Processor Series unit.

In demo mode, you can try operations on the Source Selection Screen.

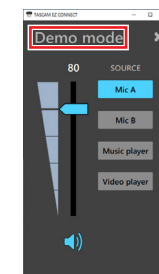
NOTE

When used in demo mode, Dante Compact Processor Series unit settings cannot be changed.

1. Tap the ≡ button at the bottom left of the login screen. This opens a pop-up menu.



2. Tap the Demo mode button to enable use in demo mode. "Demo Mode" appears at the top left of the screen when demo mode is active.



3 - TASCAM EZ CONNECT

Making TASCAM EZ CONNECT settings

Use of TASCAM EZ CONNECT is enabled by making settings on the EZ CONNECT page in TASCAM DCP CONNECT.

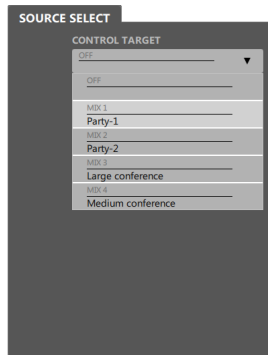
Setting the SOURCE SELECT area

Setting the input sources in the SOURCE SELECT area

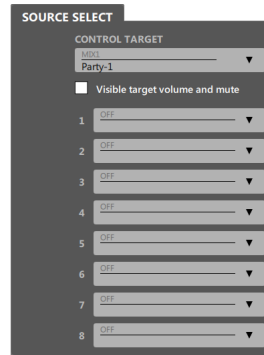
NOTE

If the EZ CONNECT page SOURCE SELECT area (④) **CONTROL TARGET** setting is **OFF** in TASCAM DCP CONNECT, the Source Selection Screen will not appear in TASCAM EZ CONNECT. Moreover, if the **CONTROL TARGET** source is selected, but all source settings are **OFF**, the Source Selection Screen will not appear in TASCAM EZ CONNECT.

1. Tap the ▼ under **CONTROL TARGET** to open the MIX tab list. (Default: **OFF**)



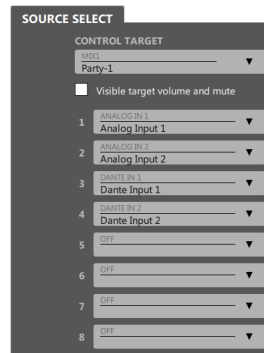
2. Select the MIX tab to be operated with TASCAM EZ CONNECT. This enables selection of the input sources to be operated with TASCAM EZ CONNECT.



ATTENTION

Do not set the same MIX channels in multiple areas. Doing so will make it not work properly.

3. Tap source selection 1 - 8 and select the input sources to be operated with TASCAM EZ CONNECT.



4. After launching and logging into TASCAM EZ CONNECT, the input sources selected in step 3 will be shown.

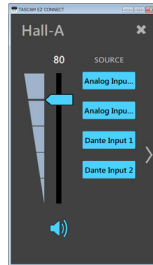


5. Tap the button for the source you want to input. Only the sound assigned to the lit button will be input. Other input sources will be muted.

3 - TASCAM EZ CONNECT

Setting volume and muting on the Source Selection Screen

Place a check (✓) in “Visible target volume and mute” to show a volume slider, which controls the MIX master channel fader, and  mute button in TASCAM EZ CONNECT.



NOTE

The volume values shown in TASCAM EZ CONNECT correspond to the TASCAM DCP CONNECT faders as follows.

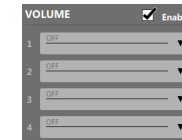
TASCAM EZ CONNECT value shown	TASCAM DCP CONNECT value shown
100	+10 dB
90	+4.8 dB
80	0 dB
70	-3.2 dB
60	-6.6 dB
50	-11.7 dB
40	-18.9 dB
30	-26.9 dB
20	-34.8 dB
10	-45.8 dB
0	-inf.

Setting the Volume Screen

NOTE

If the EZ CONNECT page **VOLUME** setting area (5) **Enable** does not have a check (✓) in TASCAM DCP CONNECT, the Volume Screen will not appear in TASCAM EZ CONNECT. Moreover, if all the volume settings are **OFF**, the Volume Screen will not appear in TASCAM EZ CONNECT.

- To enable volume control in TASCAM EZ CONNECT, put a check (✓) in **VOLUME Enable**. Four volume selection fields are shown for volume operation in TASCAM EZ CONNECT.



- Tap these areas to show volume control target lists. Select the channel for volume control in TASCAM EZ CONNECT.



Example when MM-2D-E connected

3 - TASCAM EZ CONNECT

The following selections are possible for volume operation.

Options			Meaning
ML-4D/OUT-E ML-4D/OUT-X	MM-2D-E MM-2D-X	MM-4D/IN-E MM-4D/IN-X	
—	<i>ANALOG IN</i> <i>1-2</i>	<i>ANALOG IN</i> <i>1-4</i>	INPUT page channel faders
<i>MIX 1-4</i>	<i>MIX 1-4</i>	<i>MIX 1-4</i>	MIX master faders for each MIX tab on the MIXER page
<i>ANALOG OUT</i> <i>1-4</i>	<i>ANALOG</i> <i>OUT 1-2</i>	—	OUTPUT page output channel faders
—	<i>MIX1</i> <i>ANALOG IN</i> <i>1-2</i>	<i>MIX1 ANALOG</i> <i>IN 1-4</i>	MIXER page MIX1 tab ANALOG IN channel faders
<i>MIX1 DANTE IN</i> <i>1-4*</i>	<i>MIX1 DANTE</i> <i>IN 1-4*</i>	<i>MIX1 DANTE</i> <i>IN 1-4*</i>	MIXER page MIX1 tab DANTE channel faders
—	<i>MIX2</i> <i>ANALOG IN</i> <i>1-2</i>	<i>MIX2 ANALOG</i> <i>IN 1-4</i>	MIXER page MIX2 tab ANALOG IN channel faders
<i>MIX2 DANTE IN</i> <i>1-4*</i>	<i>MIX2 DANTE</i> <i>IN 1-4*</i>	<i>MIX2 DANTE</i> <i>IN 1-4*</i>	MIXER page MIX2 tab DANTE channel faders
—	<i>MIX3</i> <i>ANALOG IN</i> <i>1-2</i>	<i>MIX3 ANALOG</i> <i>IN 1-4</i>	MIXER page MIX3 tab ANALOG IN channel faders
<i>MIX3 DANTE IN</i> <i>1-4*</i>	<i>MIX3 DANTE</i> <i>IN 1-4*</i>	<i>MIX3 DANTE</i> <i>IN 1-4*</i>	MIXER page MIX3 tab DANTE channel faders
—	<i>MIX4</i> <i>ANALOG IN</i> <i>1-2</i>	<i>MIX4 ANALOG</i> <i>IN 1-4</i>	MIXER page MIX4 tab ANALOG IN channel faders
<i>MIX4 DANTE IN</i> <i>1-4*</i>	<i>MIX4 DANTE</i> <i>IN 1-4*</i>	<i>MIX4 DANTE</i> <i>IN 1-4*</i>	MIXER page MIX4 tab DANTE channel faders

* The number of Dante channels that can be used depends on the sampling frequency shown in the **SAMPLING FREQUENCY** item on the SETTINGS page. (see “SETTINGS page” on page 24)

- Launch TASCAM EZ CONNECT and log in.
The volume selected in step 2 will be shown on the Volume Screen in TASCAM EZ CONNECT.

NOTE

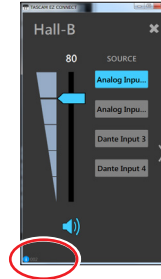
If the EZ CONNECT page SOURCE SELECT area (④) **CONTROL TARGET** setting is **OFF**, only the Volume Screen will appear in TASCAM EZ CONNECT.

- Adjust volume levels by dragging the sliders left and right for items that need volume adjustment.

3 - TASCAM EZ CONNECT

Understanding information codes

If settings have not been made properly for a Dante Compact Processor Series device in TASCAM DCP CONNECT, information codes will appear in TASCAM EZ CONNECT.



Information codes will only appear when settings are incorrect.
Set the Dante Compact Processor Series device so that information codes do not appear.

Information code meanings and responses

	Information code meaning	Response	Operation when information code is shown
001	The area names are not the same among multiple units.	Make the area names the same for the multiple units.	Only one area name will be shown until the area names are made the same for the multiple units.
002	"Visible target volume and mute" has a check (✓) on the EZ CONNECT pages for multiple units.	Put no more than one check (✓) in "Visible target volume and mute" for each area on the EZ CONNECT pages.	If "Visible target volume and mute" has a check (✓) on the EZ CONNECT pages for multiple units, volume and mute will only be available for one unit.
50x (x is a number 1-8)	Source number x is set for multiple units in the SOURCE SELECT areas (④) of their EZ CONNECT pages.	Set source number x in the SOURCE SELECT area (④) of the EZ CONNECT page for only one unit. Set the other units to OFF .	When source number x is set for multiple units in the SOURCE SELECT areas (④) of their EZ CONNECT pages, the source selection button for only one unit will be shown on the Source Selection Screen.
V0x (x is a number 1-4)	Volume number x is set for multiple units in the VOLUME setting areas (⑤) of their EZ CONNECT pages.	Set volume number x in the VOLUME setting area (5) of the EZ CONNECT page for only one unit. Set the other units to OFF .	When volume number x is set for multiple units in the VOLUME setting areas (⑤) of their EZ CONNECT pages, volume will be enabled for only one on unit the Volume Screen.

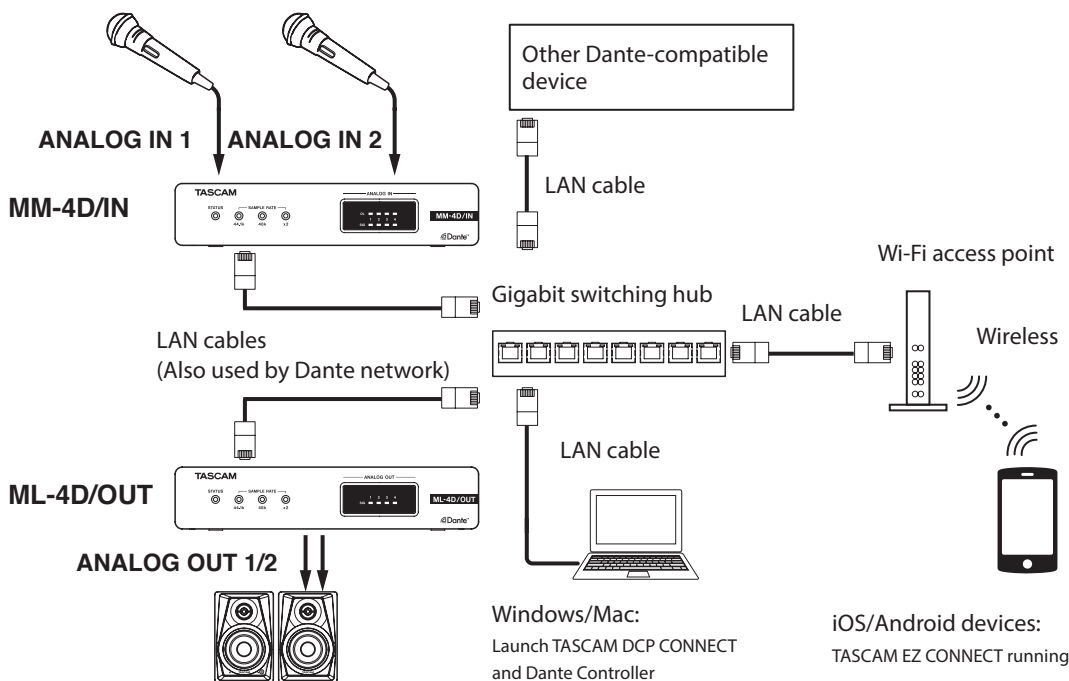
4 - TASCAM EZ CONNECT setting example

Operating multiple Dante Compact Processor Series devices with TASCAM EZ CONNECT

Multiple Dante Compact Processor Series devices can be controlled with TASCAM EZ CONNECT. The following conditions are necessary, however, to control Dante Compact Processor Series devices properly with TASCAM EZ CONNECT.

- ① Make the area names set on multiple Dante Compact Processor Series devices the same.
- ② Make the area passwords set on multiple Dante Compact Processor Series devices the same.
- ③ Only put one check (✓) in "Visible target volume and mute" for each area. Proper operation is not possible if check marks (✓) are put into more than one.
- ④ When setting the input sources for source selection, do not set the same number source selection for multiple Dante Compact Processor Series devices. For example, if one Dante Compact Processor Series device has source selection 1 set to ANALOG IN 1, set source selection 1 to OFF on other Dante Compact Processor Series devices.
- ⑤ Do not use the same number for the VOLUME setting with multiple Dante Compact Processor Series devices.

Connection example using two Dante Compact Processor Series devices

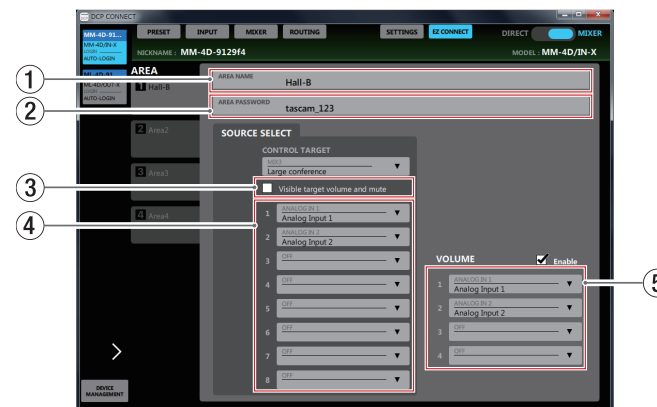


NOTE

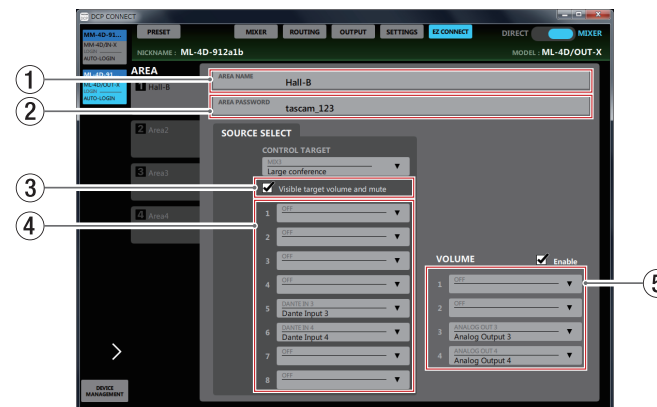
TASCAM EZ CONNECT can operate MX-8A units. For details, see the TASCAM MX CONNECT

operation manual.

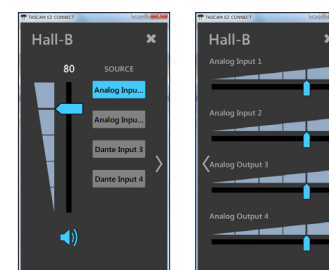
EZ CONNECT page settings for MM-4D/IN



EZ CONNECT page settings for ML-4D/OUT



TASCAM EZ CONNECT screens when the above settings are made



TASCAM

TEAC CORPORATION

Phone: +81-42-356-9143

1-47 Ochiai, Tama-shi, Tokyo 206-8530 Japan

<https://tascam.jp/jp/>

TEAC AMERICA, INC.

Phone: +1-323-726-0303

10410 Pioneer Blvd. Suite #1 Santa Fe Springs, California 90670, U.S.A.

<https://tascam.com/us/>

TEAC UK Ltd.

Phone: +44-1923-797205

Meridien House, Ground Floor, 69 - 71, Clarendon Road, Watford, Hertfordshire, WD17 1DS, United Kingdom

<https://tascam.eu/>

TEAC EUROPE GmbH

Phone: +49-611-71580

Bahnstrasse 12, 65205 Wiesbaden-Erbenheim, Germany

<https://www.tascam.eu/de/>

TEAC SALES & TRADING(SHENZHEN) CO., LTD

Phone: +86-755-88311561~2

Room 817, Xinian Center A, Tairan Nine Road West, Shennan Road, Futian District, Shenzhen, Guangdong Province 518040, China

<https://tascam.cn/cn/>
